

---

**Attachment 4**  
**Consultation report**

---



# ENVIRONMENTAL IMPACT STATEMENT / ENVIRONMENT EFFECTS STATEMENT

Consultation Report



**CONFIDENTIAL**

These records and accompanying documentation consist of commercial in confidence information prepared by representatives or consultants working on Marinus Link. The information contained in these records is of a confidential and/or commercially sensitive nature and should not be used, disclosed or transferred to any other entity without Marinus Link Pty Ltd's express written permission as to do so could cause Marinus Link Pty Ltd a commercial/competitive disadvantage. All records are not intended for public release.

# Quality information

## Revision history

Revision	Description	Date	Author	Reviewer	Approver
0	Final	31/05/2024	MLPL	MLPL	MLPL

## Distribution

Report Status	No. of copies	Format	Distributed to	Date
0	1	PDF	Marinus Link Pty Ltd	31/05/2024

# Data protection and privacy

Marinus Link is covered by and complies with TasNetwork's Privacy Policy and its associated obligations under The Privacy Act 1988 (Cth) (Privacy Act) and the Personal Information Protection Act 2004 (TAS) (PIP Act). For more information go to Privacy Policy ([tasnetworks.com.au](https://tasnetworks.com.au)).

# Responsibilities

This document is the responsibility of Marinus Link Pty Ltd, ABN 47 630 194 562 (hereafter referred to as "Marinus Link").

You can contact us with any questions about Marinus Link via our dedicated email and phone line. If you would like to find out more, you can also visit the [Marinus Link website](#), email us at [team@marinuslink.com.au](mailto:team@marinuslink.com.au), or call us on 1300 765 275.

### Enquiries regarding this document should be addressed to:

Mark Lindsay  
A/Head of Communications and Community Engagement  
Marinus Link Pty. Ltd.  
PO BOX 606  
Moonah TAS 7009  
Email: [team@marinuslink.com.au](mailto:team@marinuslink.com.au)

# Executive Summary

Marinus Link is a proposed undersea and underground electricity and telecommunications interconnector between Tasmania and Victoria, which will further connect Tasmania to the National Electricity Market.

Marinus Link will comprise of high-voltage direct current (HVDC) cables, fibre optic cables, and converter stations in both Tasmania and Victoria. It will be about 345 kilometres long – 255 kilometres of undersea cables and 90 kilometres of underground cables.

In 2021, Marinus Link submitted referrals under the Commonwealth *Environment Protection and Biodiversity Conservation Act 1999* (EPBC Act) and the Victorian *Environment Effects Act 1978* (EE Act).

In late 2021, relevant Commonwealth and State authorities determined the project required assessment and approval under the Commonwealth EPBC Act and the Victorian EE Act by undertaking an Environmental Impact Statement (EIS) and Environment Effects Statement (EES).

Draft scoping requirements for the EES were released for public comment by the Victorian Government on 23 August 2022, and draft guidelines for the EIS were released for public comment by the Commonwealth Government on 24 August 2022. Final scoping requirements were published in February 2023.

This Consultation Report is an attachment to Marinus Link's EIS/EES, providing details of communication and consultation undertaken by the project following the release of the draft scoping requirements and guidelines, a key component of the project's statutory approvals process.

Between 2018 and 2023 Marinus Link has communicated and engaged broadly about the process, the project, potential impacts and mitigations, as outlined on the following page, and in this report. The project team will continue to do so throughout the project lifecycle.

# Acronyms and definitions

Acronym	Definition
AEMO	Australian Energy Market Operator
AMSA	Australian Maritime Safety Authority
DEECA	Department of Energy, Environment, and Climate Action
DELWP	Department of Environment, Land, Water and Planning
DTP	Department of Transport and Planning
EE ACT	<i>Environment Effects Act 1978</i>
EES	Environment Effects Statement
EIS	Environmental Impact Statement
EIA	Environmental Impact Assessment
EPA	Environment Protection Authority
EPBC Act	<i>Environment Protection and Biodiversity Conservation Act 1999</i>
HVAC	High Voltage Alternating Current
HVDC	High Voltage Direct Current
IAP2	International Association for Public Participation
ICN	Industry Capability Network
kW	Kilowatt
Landholder	Registered proprietors, land managers and land tenants
NEM	National Electricity Market
MW	Megawatt
RAP	Registered Aboriginal Party
RDV	Regional Development Victoria
RIT-T	Regulatory Investment Test for Transmission
SETFIA	South East Trawl Fishing Industry Association
Stakeholder	Any person, group or organisation who has an interest in the project
TRG	Technical Reference Group
VSC	Voltage Source Conversion

# Table of Contents

<b>Executive Summary</b> .....	<b>ii</b>
<b>Acronyms and definitions</b> .....	<b>iii</b>
<b>1 Introduction</b> .....	<b>1</b>
1.1 About the project .....	1
1.2 Planning and approval process.....	2
1.3 A coordinated approach, scoping requirements and EIS guidelines .....	3
1.4 Scoping requirements and consultation .....	3
1.5 Goals and objectives of the Consultation Plan .....	4
1.6 The TRG .....	5
<b>2 Engagement overview</b> .....	<b>6</b>
2.1 Engagement snapshot.....	6
2.2 Engagement approach .....	7
2.3 Stakeholders .....	7
2.4 Consultation phases .....	8
2.4.1 Phase 1: Raise awareness .....	9
2.4.2 Phase 2: Raise awareness and gather information .....	9
2.4.3 Phase 3: Communicating the project’s impacts and mitigations, and responding to local concerns .....	10
2.4.4 Phase 4: Public exhibition.....	10
2.4.5 Phase 5: Inform the community and support construction communication and engagement .....	10
<b>3 Delivering the Consultation Plan</b> .....	<b>10</b>
3.1 Promoting the engagement program.....	11
3.2 Communication tools and materials .....	13
3.3 Engagement activities - Victoria.....	15
3.3.1 Digital/online engagement .....	15

3.3.2	Drop-in information sessions .....	15
3.3.3	Key stakeholder engagement .....	17
3.4	Engagement activities – Tasmania .....	23
3.5	Landholder engagement.....	24
3.6	First Peoples .....	25
3.6.1	Victoria.....	25
3.6.2	Tasmania .....	26
3.7	Gippsland Stakeholder Liaison Group.....	26
<b>4</b>	<b>What we’ve heard.....</b>	<b>27</b>
4.1	Feedback and responses - Victoria.....	28
4.2	Feedback and responses – Tasmania .....	47
<b>5</b>	<b>How feedback is used.....</b>	<b>50</b>
5.1	Design .....	50
5.2	Environmental Performance Requirements.....	50
5.3	Summary of key changes to project design.....	51
5.4	Communication and engagement .....	51
<b>6</b>	<b>For more information .....</b>	<b>51</b>

## Index of Figures

Figure 1	Marinus Link project components .....	1
Figure 2	Project overview and jurisdictional boundaries.....	2
Figure 3	Engagement snapshot .....	6
Figure 4	Key stakeholders.....	8
Figure 5	Consultation phases.....	8
Figure 6	Drop-in session details .....	17

# Index of Tables

Table 1 Promoting the engagement program.....	12
Table 2 Phase 3 Communication materials and tools .....	13
Table 3 Phase 3 digital tools and channels.....	15
Table 4 Drop-in information sessions March to April 2023 .....	16
Table 5 Key stakeholder engagement .....	18
Table 6 Timeline if key Phase 3 engagement activities in Tasmania .....	23
Table 7 Feedback and responses – construction impacts and amenity .....	29
Table 8 Feedback and responses – land access .....	32
Table 9 Feedback and responses – agriculture .....	34
Table 10 Feedback and responses – ecology.....	36
Table 11 Feedback and responses – groundwater and surface water.....	38
Table 12 Feedback and responses – marine and fisheries .....	39
Table 13 Feedback and responses – First Peoples and cultural heritage.....	41
Table 14 Feedback and responses – project design and construction.....	44
Table 15 Feedback and responses – community benefits and impacts .....	45
Table 16 Feedback and responses – project information and benefits .....	46
Table 17 Feedback and responses – Heybridge.....	48





# 1 Introduction

## 1.1 About the project

Marinus Link (the project) is a proposed undersea and underground electricity and telecommunications interconnector between Tasmania and Victoria, which will further connect Tasmania to the National Electricity Market (NEM).

The project will comprise of high-voltage direct current (HVDC) cables, fibre optic cables, and converter stations in both Tasmania and Victoria. It will be about 345 kilometres long – 255 kilometres of undersea cables and 90 kilometres of underground cables (Figure 1).

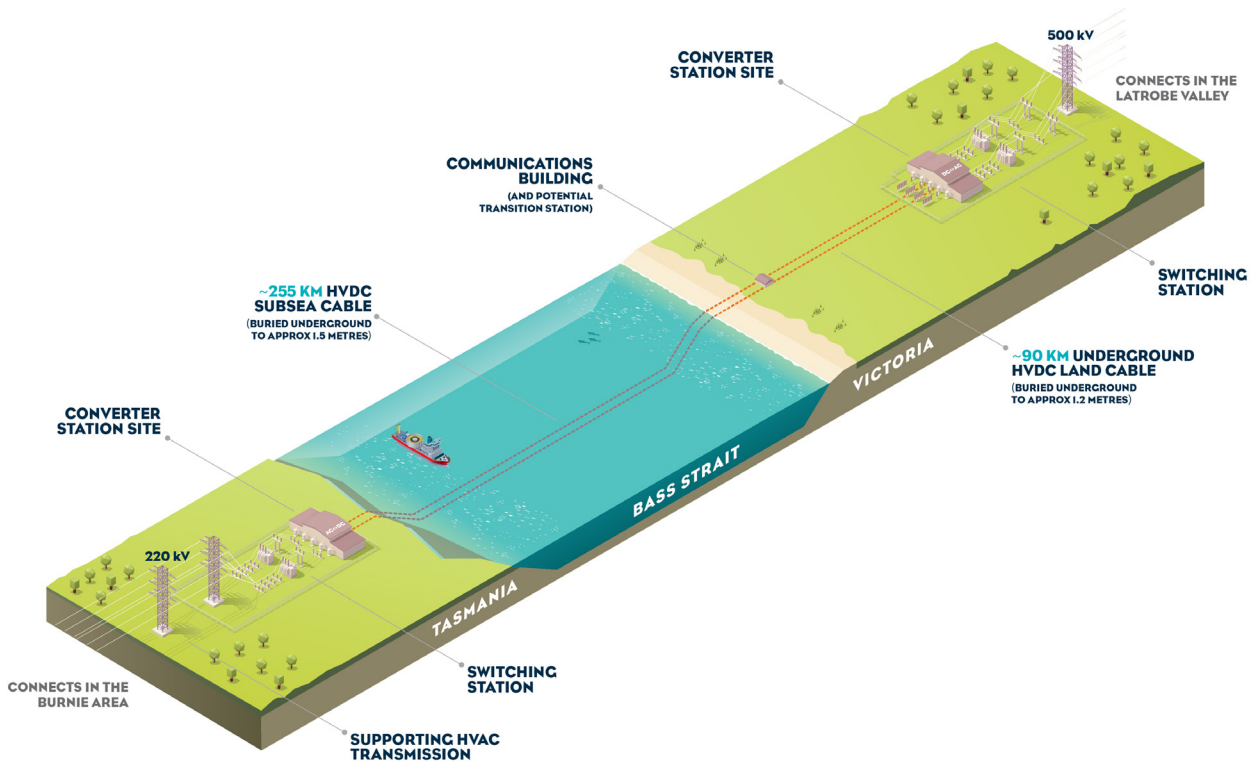


Figure 1 Marinus Link project components

The project will also be supported by more than 240 kilometres of high voltage alternating current (HVAC) network developments in Tasmania, under the North West Transmission Developments.

Implementation of the project is expected to support a reduction in greenhouse gas emissions by 140 million tonnes of carbon dioxide equivalent (CO<sub>2</sub>e) by 2050, the equivalent of taking approximately a million petrol/diesel cars off the road. 1500 megawatts equates to supplying 1.5 million Australian homes with electricity at any given time.

It will deliver low-cost, reliable and clean energy for the NEM and helps Australia to achieve an aspirational target of net zero emissions by 2050 – meeting the climate challenge by delivering a lower-carbon future.

The project will put downward pressure on wholesale electricity prices by introducing additional dispatchable capacity that replaces more expensive generators.

The proposed project will deliver up to 3300 direct and indirect jobs in Victoria and Tasmania at peak construction.

## 1.2 Planning and approval process

In 2021, MLPL submitted referrals under the Commonwealth Environment Protection and Biodiversity Conservation Act 1999 (EPBC Act) and the Victorian Environment Effects Act 1978 (EE Act).

In late 2021, relevant Commonwealth and State authorities determined that the project requires assessment and approval under the Commonwealth EPBC Act and the Victorian EE Act by undertaking an Environmental Impact Statement (EIS) and Environment Effects Statement (EES).

The Tasmanian section of the project is being assessed under relevant Tasmanian legislation and will comprise two separate EISs – one for the converter station and one for the shore crossing. Consultation on the Tasmanian component of the project does not form part of this report.

Figure 2 provides a geographical overview of the project and associated jurisdictional boundaries.

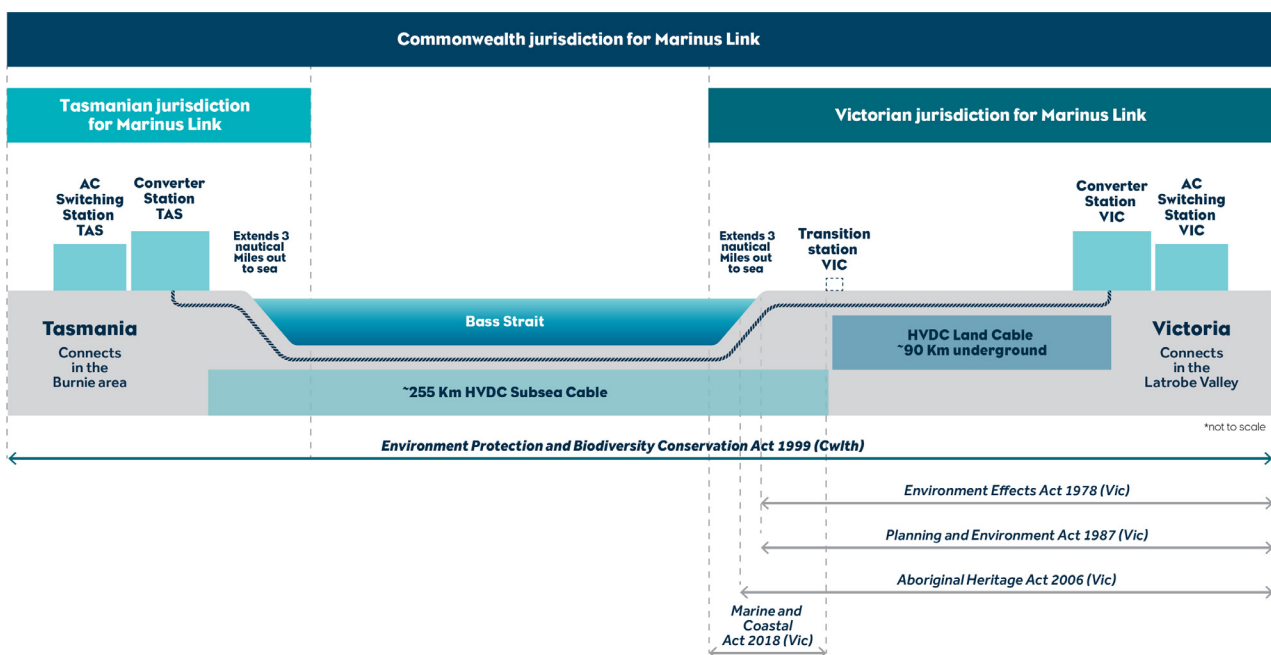


Figure 2 Project overview and jurisdictional boundaries

## 1.3 A coordinated approach, scoping requirements and EIS guidelines

In Victoria, the Minister for Planning determined the EES must investigate and document the potential environmental effects (direct and/or indirect) of the proposed project, including for any relevant alternatives, as well as associated environmental avoidance, mitigation and management measures.

From a Commonwealth perspective it was determined since the project is located across multiple jurisdictions, the EES process could not be used as the sole means for assessing EPBC Act matters.

The Victorian Department of Transport and Planning (DTP) and the Commonwealth Department of Climate Change, Energy, Environment and Water (DCCEEW) agreed to coordinate the administration of the EES under Victorian legislation and the EIS under Commonwealth legislation, to maximise alignment and remove duplication where possible.

Technical studies, engagement with government agencies and development of the EES and EIS have been integrated. This included public comment on draft scoping requirements and assessment documentation, and using the Technical Reference Group (TRG), established and chaired by DTP, to advise on the development of the EIS/EES.

Draft scoping requirements for the EES were released for public comment by the Victorian Government on 23 August 2022, and draft guidelines for the EIS were released for public comment by the Commonwealth Government on 24 August 2022. The final scoping requirements were released in February 2023.

For more information on the approvals process and scoping requirements, visit the Environmental Approvals page on Marinus Link's website (<https://www.marinuslink.com.au/environmental-approvals/>).

## 1.4 Scoping requirements and consultation

The Victorian EES scoping requirements set out that consultation with the community, stakeholders and First Peoples must inform the development of the project and technical studies prepared for the EES. The scoping requirements also specify that the proponent is responsible for preparing and implementing a Consultation Plan. The Consultation Plan sets out the engagement approach required to inform the EIS/EES for areas onshore and offshore within state waters up to three nautical miles (NM) offshore. The Consultation Plan was reviewed and amended in consultation with the TRG and DTP. The Plan was developed to:

- Provide appropriate opportunities for input and feedback from different stakeholders on the project and EIS/EES investigations, and inform them of these opportunities.
- Provide an outline of a program for community stakeholder engagement and communications for the construction and operational phases of the project.
- Support and enable culturally appropriate, informed and meaningful engagement with First Peoples, including ongoing engagement.

This Consultation Report details the outcomes from the implementation on the Consultation Plan and includes details of the issues raised and the project's response to these issues.

The project's EIS/EES Consultation Plan is available on the Victorian Government's Department of Transport and Planning environmental assessment website (<https://www.planning.vic.gov.au/environment-assessment/browse-projects/projects/marinus-link/overview>).

The EIS/EES includes information to address the consultation and engagement requirements of the EIS guidelines and EES scoping requirements in the following chapters:

- Volume 1 Introduction, Chapter 8 – Community and stakeholder engagement
- Volume 2 Tasmania, Chapter 1 – Introduction
- Volume 3 Marine, Chapter 1 – Introduction
- Volume 4 Victoria, Chapter 1 – Introduction

## 1.5 Goals and objectives of the Consultation Plan

The overall engagement goal is to help meet the objectives of the EIS/EES process. The specific goals of engagement include:

- Providing information about the project through multiple communication channels, including print, digital, advertising and through face-to-face engagement.
- Fully identifying interested stakeholders and their preferred methods of engagement.
- Helping people understand the project and participate, by ensuring communication materials are clear and accessible.
- Providing multiple opportunities for engagement and feedback during the project, including throughout the EIS/EES process.
- Providing opportunities for individuals to raise concerns about specific issues and provide feedback on proposed measures to address these concerns.
- Explaining how community and stakeholder issues and feedback are being captured and used to inform project development and assessment.
- Ensuring the project can meet the requirements under relevant laws and regulations.

## 1.6 The TRG

The DTP established and chaired a TRG, which advises MLPL on:

- Applicable policies, strategies and statutory provisions.
- EES scoping requirements issued by the Victorian Minister for Planning.
- The design and adequacy of EIS/EES technical studies.
- The proponent's public information and stakeholder consultation program for the EIS/EES process.
- Responses to issues arising from the EIS/EES investigations.
- The technical adequacy and completeness of draft EIS/EES documentation.
- Coordination of statutory processes.

Members of the TRG included representatives from:

- Department of Climate Change, Energy, the Environment and Water (Commonwealth) (DCCEEW)
- Department of Energy, Environment and Climate Action (Victoria) (DEECA)
- Department of Transport and Planning (Victoria) (DTP)
- Environment Protection Authority Victoria (EPA Victoria)
- Environment Protection Authority Tasmania (EPA Tasmania)
- First People-State Relations (Victoria) (FPSR)
- Gunaikurnai Land and Waters Aboriginal Corporation (GLaWAC)
- Heritage Victoria
- Latrobe City Council
- Maritime Safety Victoria
- Regional Roads Victoria
- South Gippsland Shire Council (SGSC)
- Victorian Fisheries Authority
- West Gippsland Catchment Management Authority (WGCMA).

Between August 2022 and December 2023, MLPL provided information to and sought feedback from the TRG. Project and community engagement updates were standard items at each session.

## 2 Engagement overview

### 2.1 Engagement snapshot

Since engagement with the broader community and stakeholders began in 2018, MLPL has been raising awareness, providing information and seeking feedback from the community and stakeholders along the project alignment.

Figure 3 provides a snapshot of the communication and engagement between 2018 and 2023.

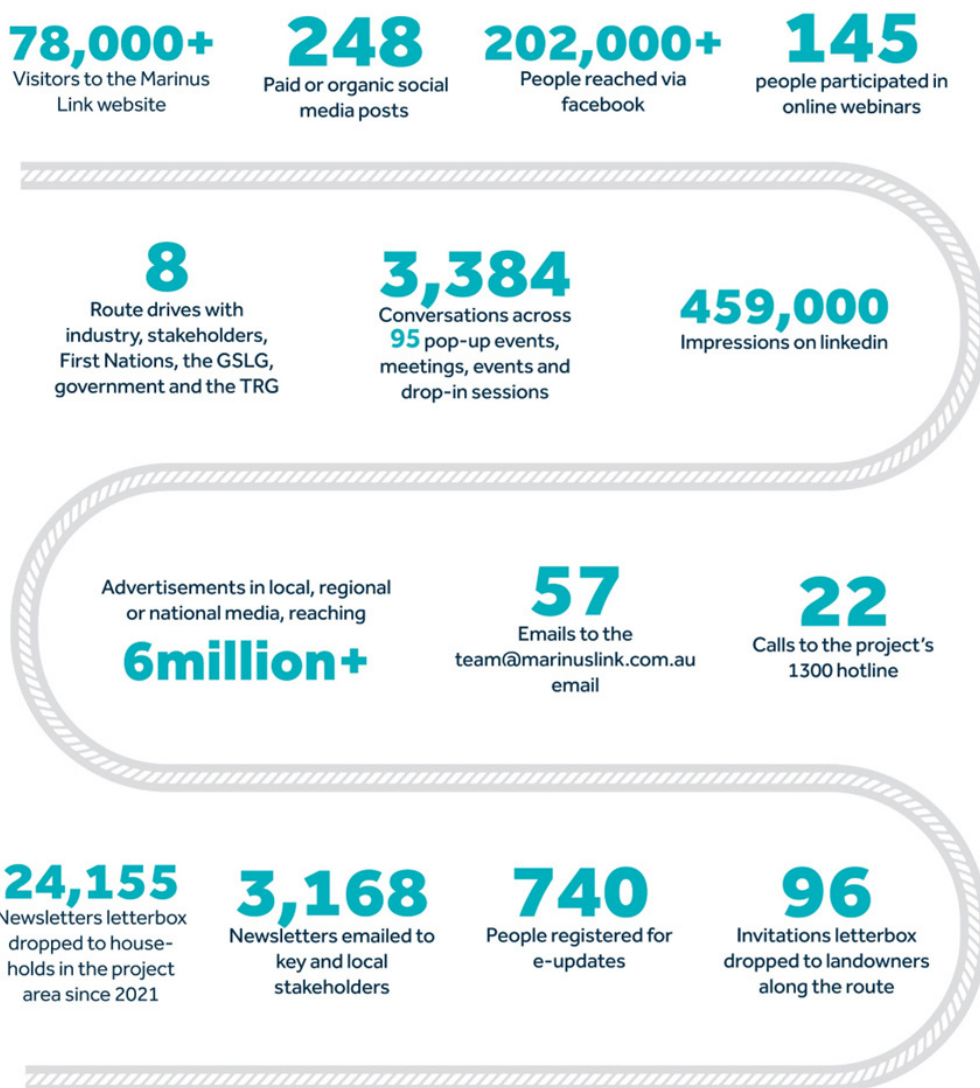


Figure 3 Engagement snapshot

## 2.2 Engagement approach

The project is subject to a large and complex multijurisdictional approvals process which provides a number of statutory engagement opportunities. To support these approvals and project development, MLPL has adopted a best-practice engagement approach, which involves actively seeking out and hearing from the broadest cross-section of the community and stakeholders, and making it as easy as possible to find information and provide feedback.

MLPL has used the IAP2 Spectrum tool to guide the approach and level of engagement required throughout the planning and assessment process. Three formal phases of engagement were designed to capture feedback throughout the project's development, aligning with project stages and key milestones.

The Consultation Plan has been developed with reference to the *Engage Early: Guidance for proponents on best practice Indigenous engagement for environmental assessments under the EPBC Act (2016)*.

Various communication and engagement channels were used to support the formal engagement program. See Section 4 for more details.

## 2.3 Stakeholders

MLPL is engaging with a diverse range of stakeholders including individuals and stakeholders directly affected by the project, as well as people, groups and organisations within the broader community who have local or specialised knowledge and feedback to share (Figure 4).

MLPL also continues to engage with government, industry and local decision makers to ensure they understand the impacts and benefits of the project, and can make fully informed decisions about its progress as applicable.



Figure 4 Key stakeholders

## 2.4 Consultation phases

As outlined in Figure 5, consultation will be delivered across five phases, each with a specific focus.

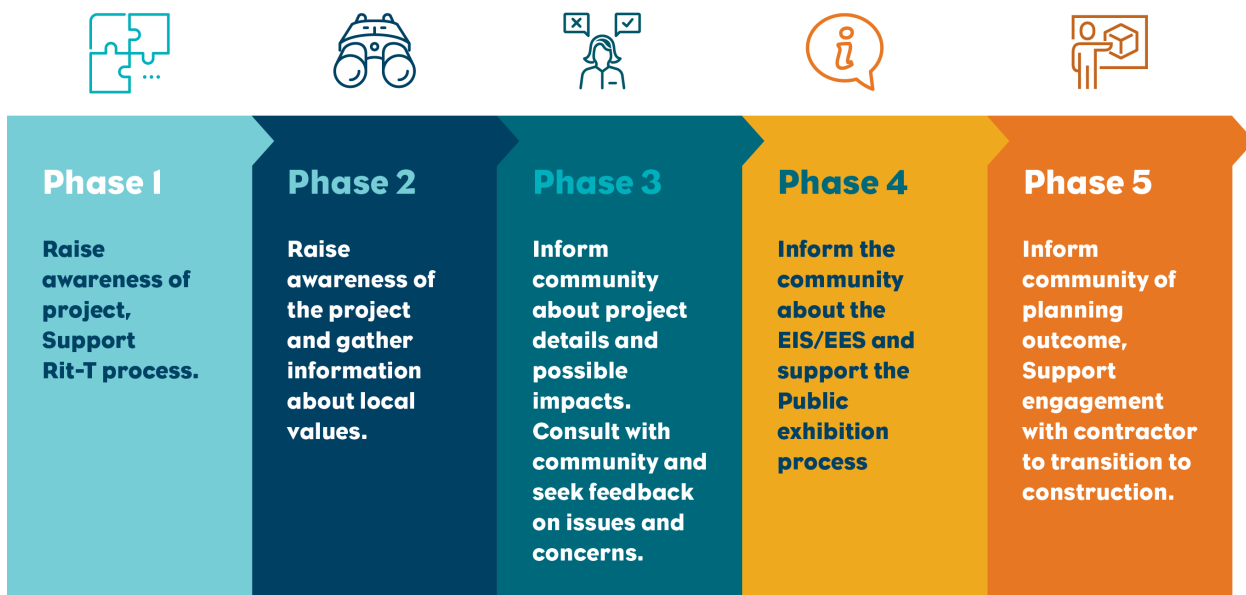


Figure 5 Consultation phases



## 2.4.1 Phase 1: Raise awareness

The first formal phase of engagement took place over an 18-month period between July 2018 and December 2019. The objectives of this phase of engagement were to:

- Raise awareness about the project.
- Support and input to the Feasibility Study, Business Case Assessment and Regulatory Investment Test for Transmission (RIT-T) processes.

Engagement throughout Phase 1 included meetings, workshops and information sessions, as well as regular print and digital communications. A summary of engagement is available on the Marinius Link website (<https://www.mariniuslink.com.au/wp-content/uploads/2019/05/Project-Specification-Consultation-Report.pdf>).

In June 2021, the Marinius Link Project Assessment Conclusions Report (PACR) (<https://www.mariniuslink.com.au/wp-content/uploads/2021/06/Project-Marinius-RIT-T-PACR.pdf>) was published, demonstrating that the project satisfies the regulatory investment test for transmission.

## 2.4.2 Phase 2: Raise awareness and gather information

Phase 2 engagement was delayed due to bushfire impacts and COVID-19. However, in November 2020, engagement with Gippsland landholders began along the proposed route, with several face-to-face meetings and public community information sessions.

In early 2021, engagement with the broader Victorian public started, which focused on:

- Raising awareness of the project and capturing feedback on the proposed route.
- Raising awareness about the upcoming environmental planning and assessment referrals.

In late 2021, regular face-to-face engagement activities returned and were added to the engagement schedule, alongside digital engagement options. These activities included:

- Attending local community markets to raise awareness about the project and the planning and assessment process.
- Hosting webinars to provide details about the project and the planning and approvals process.
- Formation of the Marinius Link Gippsland Stakeholder Liaison Group which meets bi-monthly to quarterly.
- Regular meetings and briefing sessions with state government authorities, local Traditional Owner Groups and industry organisations.

Between February and July 2022, MLPL engaged broadly across Victoria and Tasmania, and established a First Peoples Advisory Group in late 2022, to facilitate ongoing conversations between Traditional Owners, providing valuable opportunities for cultural exchange, understanding and capacity building.

### 2.4.3 Phase 3: Communicating the project's impacts and mitigations, and responding to local concerns

Preparation of the EIS/EES began in August 2022 and communication and engagement at this time focused on key themes, topics and interests to align with the development of the EES technical studies and associated project development.

A range of engagement activities were undertaken between August and December 2022 to raise awareness and seek feedback related to potential impacts. These activities responded to the organisation's commitments outlined in the Consultation Plan at Section 1.4.1.

In early 2023, engagement activities shifted focus to sharing information from the early findings of the technical studies and seeking further feedback on potential impacts and proposed management approaches.

**Phase 3 is the focus of this report.**

### 2.4.4 Phase 4: Public exhibition

In 2024, the project's combined EIS and EES will be placed on public exhibition so community members can learn more about the project's potential impacts and provide comment on the project and impact mitigation, via a formal submission process.

During this phase, MLPL will focus on ensuring people can access information to make informed submissions about the project, and supporting activities undertaken by the Department of Transport and Planning (DTP).

### 2.4.5 Phase 5: Inform the community and support construction communication and engagement

Following Public Exhibition, MLPL will communicate the outcomes of the Minister's Assessment and opportunities for future engagement to organisations, stakeholders and the broader community.

## 3 Delivering the Consultation Plan

MLPL committed to and delivered a range of communication and engagement activities and tools within its EIS/EES Consultation Plan developed for and approved by the Victorian Government, during the Phase 3 consultation phase.

Engagement during Phase 3 took place from August 2022 to December 2023. A series of engagement activities were held in late 2022 and early 2023.

The project provided a diverse range of opportunities to meet stakeholder and local community needs.

## 3.1 Promoting the engagement program

Between August 2022 and April 2023, MLPL undertook several activities to raise awareness of engagement opportunities and encourage participation during Phase 3.

These activities were additional to the project's ongoing email updates and social media presence, which aimed to keep the community updated on activities such as geotechnical testing that were visible in the public domain.

Targeted promotion to support the community's involvement in engagement sessions and webinars is outlined in Table 1 below.

Table 1 Promoting the engagement program

Activity	Details	When	Statistics	Totals
Newspaper advertising	Advertising community drop-in sessions and webinars.	Aug – Dec 2022	2 x print advertisements in local media	14 advertisements
		Mar – Apr 2023	12 x digital and print advertisements in local, regional and state media, reaching 6 million + people	
Social media	Promoting community drop-in sessions and webinars.	Aug – Dec 2022	4 x social media posts on Facebook @marinuslink	16 paid or organic social media posts
		Mar – Apr 2023	12 x paid (geo-targeted) and organic posts reaching 23,000+ people, including: LinkedIn @marinus-link Facebook @marinuslink	
Stakeholder emails	Promoting community drop-in sessions and webinars.	Aug – Dec 2022	102 local and key stakeholder emails	309 stakeholder emails
		Mar – Apr 2023	207 emails to government, industry and local stakeholders	
Newsletters	Providing project info, updates, and engagement opportunities.	Aug – Dec 2022	1 newsletter letterbox dropped to 3261 properties in the project area	7933 newsletters letterbox dropped
		Mar – Apr 2023	1 newsletter letterbox dropped to 4672 properties across an expanded footprint in the project area	
Direct invitations to engagement sessions	Invitation to attend the drop-in sessions	Mar – Apr 2023	1 letter to 96 landholders along the route	96 direct invitations letterbox dropped to landholders
<b>TOTAL</b>				<b>8,368 promotions</b>

## 3.2 Communication tools and materials

MLPL provided a range of communication tools and materials to support engagement across all engagement phases, with a key focus on providing clear and easy to understand information in a range of online and hard copy formats.

Communication tools and materials used to support Phase 3 are outlined in Table 2 below.

Table 2 Phase 3 Communication materials and tools

Asset	Details	When	Statistics	Total
The project website <a href="http://marinuslink.com.au">marinuslink.com.au</a>	MLPL developed a website that was subject to ongoing updates and iterations in line with the project's development, key findings, updates and news, and community feedback.	2018 – current	59,000 site visits	59,000 site visits
Newsletters/ community updates	Newsletters/ community updates provided information on the project, updates or news, survey outcomes, details on upcoming engagement activities, how stakeholders could contact the project team or provide feedback. Newsletters/ updates were provided in hard copy and digital format and made available on the project's document and resources page.	Aug 2022	Letterbox drop to 3,261 households across the project area	9073 recipients
			Emailed to 58 key government, industry & local stakeholders	
			Emailed to 425 registered for e-updates	
		Mar 2023	Letterbox drop to an expanded footprint of 4672	
			Emailed to 72 key government, industry & local stakeholders	
			Emailed to 585 people registered for e-updates	

Asset	Details	When	Statistics	Total
Fact sheets	<p>A suite of fact sheets were created to support people’s understanding of the project and provide them with information to inform their feedback.</p> <p>Fact sheets were provided in hard copy and digital formats and made available on the project’s website and at in-person engagement information sessions.</p> <p>Fact sheets include:</p> <ul style="list-style-type: none"> <li>• Abbreviations, definitions and acronyms</li> <li>• Ecology</li> <li>• Electromagnetic Fields and Electromagnetic Interference (EMI)</li> <li>• Gippsland’s Cultural Heritage</li> <li>• Information pack</li> <li>• Managing Construction Impacts</li> <li>• Marine and Fisheries</li> <li>• Marine Ecology</li> <li>• On land construction</li> <li>• Route Options Analysis</li> <li>• Subsea Construction</li> <li>• Tasmania (Heybridge) – Converter Station</li> <li>• Victoria – Converter Station</li> <li>• Victoria – Land Access and Easement Acquisition.</li> </ul>	N/A	N/A	N/A
Maps	<p>Maps were developed for in-person sessions and provided online to enable people to view the proposed project route in relation to their property or interest.</p> <p>The long and linear photo-based maps were broken up into five sections which reflect the route. Map details included:</p> <ul style="list-style-type: none"> <li>• Local roads, vegetation, houses etc.</li> <li>• The proposed route alignment</li> <li>• The 200m survey corridor</li> <li>• Horizontal Directional Drilling locations</li> <li>• Known laydown areas</li> <li>• Major haulage routes.</li> </ul>	N/A	N/A	N/A
Engagement reports and meeting minutes	<p>Engagement reports and Gippsland Stakeholder Liaison Group meeting minutes were published on the project’s website following engagement activities, summarising what we heard and how this has informed project outcomes.</p> <p>These reports are available on the engagement page on the Marinus Link website.</p>	Aug 2022 – Jun 2023	N/A	N/A
Webinar recordings	<p>Webinars were recorded and uploaded onto the project’s documents and resources page for future viewing.</p>	<p>Aug 2022</p> <hr/> <p>Mar 2023</p>	<p>N/A</p> <hr/> <p>N/A</p>	N/A

### 3.3 Engagement activities - Victoria

Engagement activities during Phase 3 comprised a range of face-to-face and digital or online opportunities to ensure stakeholders and the community could engage with the project, learn about its impacts and benefits, and provide feedback directly to the project team.

#### 3.3.1 Digital/online engagement

MLPL provided stakeholders and the community with multiple ways to engage online, including webinars and an online feedback survey. These are outlined in Table 3 below.

Table 3 Phase 3 digital tools and channels

Tool/ channel	Purpose	Date	Participation
<b>Webinars</b> Four individual webinars via Zoom were held to correspond with the two distinct project milestones and associated feedback requirements.	2 x webinars to support the Victorian Government’s release of the draft EES scoping requirements and the Commonwealth Government’s EIS guidelines.	Aug 2022	46
	2 x webinars to provide information about the project’s impacts and proposed mitigations.	Apr 2023	67
<b>Feedback survey</b> MLPL’s online feedback survey was launched in April 2023 as another way for community members to provide feedback at a time or location that suited them.	Respondents were asked to provide feedback on their key concerns relating to the technical studies, and the project’s impacts and proposed mitigations, to inform the consultation report, during Phase 3 only.	Apr – May 2023	1 survey respondent
<b>TOTAL</b>			<b>114</b>

#### 3.3.2 Drop-in information sessions

Drop-in information sessions were held in March and April 2023 (Table 4) to share information about the early findings of the technical studies and seeking further feedback on potential impacts and proposed management approaches, to feed into the project’s performance requirements and the EIS/EES consultation report.

Table 4 Drop-in information sessions March to April 2023

Date	Time	Location	Participation
23-Mar-23	5pm-7pm	Churchill	10
25-Mar-23	10am - 12pm	Churchill	6
13-Apr-23	5pm-7pm	Sandy Point	14
15-Apr-23	9am-11am	Sandy Point	26
27-Apr-23	4.30pm-6.30pm	Mirboo North	14
28-Apr-23	10am - 12pm	Dumbalk	16
28-Apr-23	5pm-7pm	Meeniyah	15
29-Apr-23	10am-12pm	Fish Creek	38
<b>Total</b>			<b>134</b>

Information sessions were targeted at local communities and towns between the shore crossing area at Waratah Bay to the south and the potential (now preferred) converter station site in Hazelwood to the north, as shown in Figure 6.

The project provided access to subject matter experts (SMEs) based on previous community feedback regarding areas of concern and interest. Land Agents who have direct relationships with landholders were also present at each session.

MLPL SMEs provided information on:

- The cable, alignment and route options
- Geotechnical surveys, the shore crossing and construction
- Environmental approvals and requirements
- Cultural heritage and Traditional Owner engagement
- Community engagement and how to provide feedback
- Safety
- Converter Stations.

External consultant SMEs provided information on findings within the technical reports including:

- Noise and vibration
- Traffic and transport
- Ecology
- Agriculture
- Marine benthic ecology.



Visitors were encouraged to ask questions about their areas of interest or concern, provide feedback on potential impacts identified in the technical reports; and ask questions on the project’s proposed design and construction and environmental approvals.

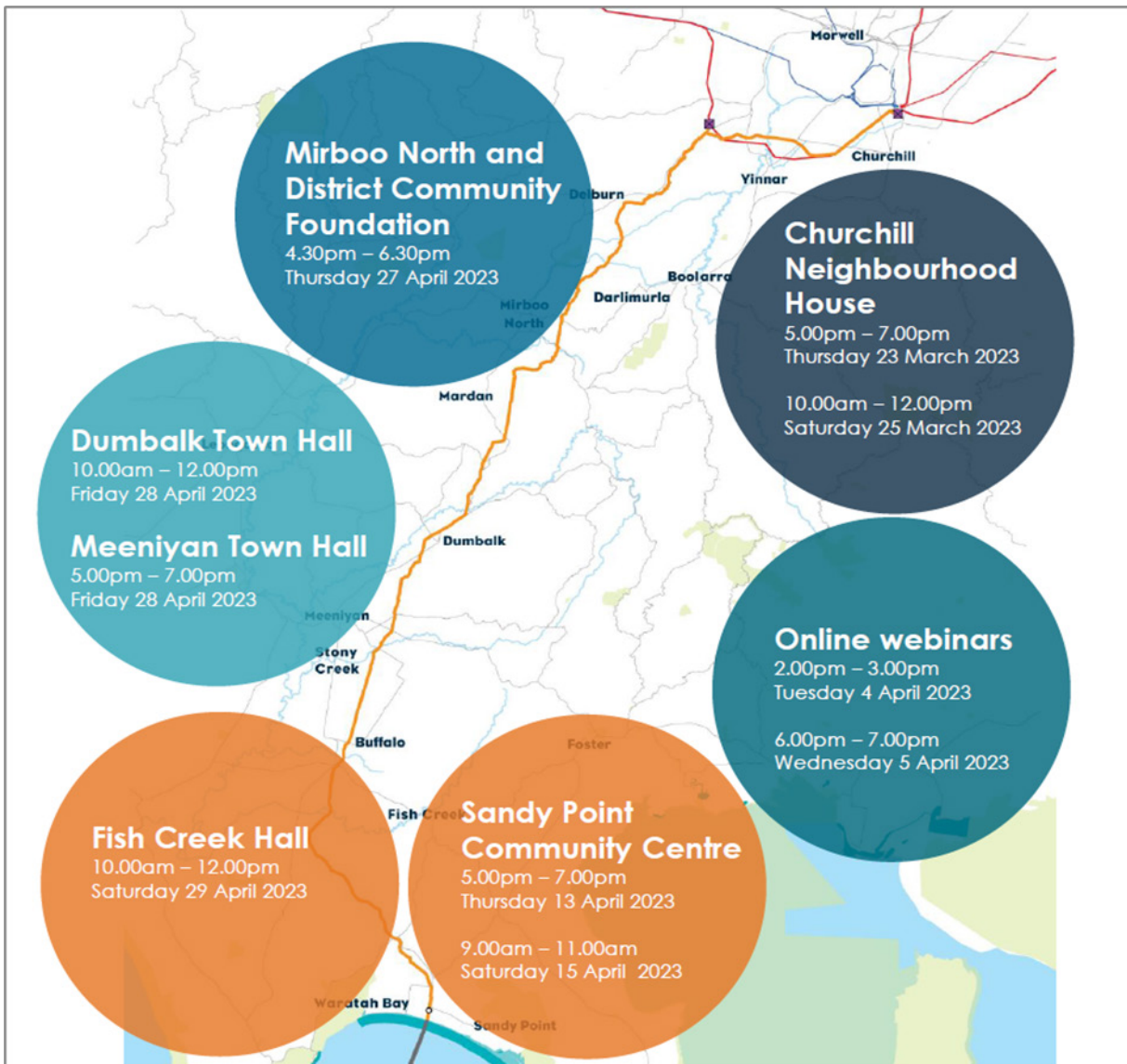


Figure 6 Drop-in session details

### 3.3.3 Key stakeholder engagement

The project also engaged with key stakeholders through face-to-face meetings and attendance at events and conferences. A summary of activities with key stakeholders is detailed in Table 5 below.

Table 5 Key stakeholder engagement

Activity	Details	Date (s)	Participation
Federation University Open Day	<ul style="list-style-type: none"> <li>Generating awareness of the project, job opportunities and skills pathways.</li> </ul>	Aug 2022	70
Federation University meeting	<ul style="list-style-type: none"> <li>Cadetships and training opportunities</li> <li>Course offerings</li> <li>Development of centre of excellence in regional transitions</li> </ul>	Aug 2022	N/A
Gippsland New Energy Conference	<ul style="list-style-type: none"> <li>Project update and positioning within the region and energy sector.</li> </ul>	Aug 2022	72
Marinus Link First Peoples Advisory Group meeting #1	<ul style="list-style-type: none"> <li>Initial discussion with Boonwurrung, Bunurong and GLaWAC representatives re engagement across groups, and the formation of an Advisory Group.</li> </ul>	Sept 22	6
Combined Community Advisory Panel and Gippsland Stakeholder Liaison Group Workshop	<ul style="list-style-type: none"> <li>Community benefit sharing</li> </ul>	Oct 22	23
Wellington Renewable Energy Forum	<ul style="list-style-type: none"> <li>Online forum with ~100 regional proponents and projects, interested in collaborating across Gippsland</li> </ul>	Oct 22	100
City of Latrobe Councillor briefing	<ul style="list-style-type: none"> <li>Project overview</li> </ul>	Oct 22	N/A
Energy Charter meeting	<ul style="list-style-type: none"> <li>Working with agricultural sector to address concerns</li> <li>Research</li> <li>Co-creating best practice guidelines for working with landholders</li> </ul>	Oct 22	N/A
South East Trawl Fishing Industry Association (SETFIA) Presentation	<ul style="list-style-type: none"> <li>Introduce the project and open a line of communications for future engagements</li> </ul>	Oct 22	20
Local Learning and Employment Network (LLEN) Inspiring Young Leaders	<ul style="list-style-type: none"> <li>Project overview, technical construction overview, job and career opportunities, route alignment</li> </ul>	Oct 22	20
Engineers Australia Forum presentation	<ul style="list-style-type: none"> <li>Project overview, technical construction overview, job and career opportunities, route alignment</li> </ul>	Oct 22	35
Foster Pop-up stand	<ul style="list-style-type: none"> <li>Project update</li> <li>Route alignment</li> </ul>	Nov 22	42
GROW Gippsland Advisory Group meeting	<ul style="list-style-type: none"> <li>Project overview, job and career opportunities, skills pathways</li> </ul>	Dec 22	12
Wellington Renewable Energy Forum	<ul style="list-style-type: none"> <li>Online forum with ~100 regional proponents and projects, interested to collaborate across Gippsland</li> </ul>	Dec 22	100
Gippsland Stakeholder Liaison Group meeting	<ul style="list-style-type: none"> <li>Project update, milestones, approvals and next steps</li> </ul>	Dec 22	14

Activity	Details	Date (s)	Participation
First Peoples Advisory Group meeting #2	<ul style="list-style-type: none"> <li>✓ EIS/EES</li> <li>✓ Cultural Heritage</li> <li>✓ Sustainability Framework</li> </ul>	Dec 22	12
Waratah Bay Community Association	<ul style="list-style-type: none"> <li>✓ Introduction, project briefing, Q&amp;A</li> </ul>	Feb 2023	11
Latrobe Valley Authority (LVA) and GROW Gippsland meeting	<ul style="list-style-type: none"> <li>✓ Traineeships and Apprenticeships</li> </ul>	Feb 2023	4
Energy Charter meeting	<ul style="list-style-type: none"> <li>✓ Underground and overhead options</li> <li>✓ Landholder engagement</li> </ul>	Feb 2023	N/A
Gippsland Stakeholder Liaison Group Meeting	<ul style="list-style-type: none"> <li>✓ Project update and introduction to the CEO</li> </ul>	Feb 2023	12
Gippsland Stakeholder Liaison Group route drive	<ul style="list-style-type: none"> <li>✓ Route alignment, local conditions, construction methodologies and the approvals process</li> </ul>	Feb 2023	18
LVA and Regional Development Victoria meeting	<ul style="list-style-type: none"> <li>✓ Project update and introduction to the CEO</li> </ul>	Feb 2023	4
GLaWAC meeting	<ul style="list-style-type: none"> <li>✓ Introduction to the CEO</li> <li>✓ First Peoples community benefits</li> <li>✓ Recruitment and targets</li> </ul>	Feb 2023	5
Latrobe City Council	<ul style="list-style-type: none"> <li>✓ Indigenous Employment</li> </ul>	Mar 2023	4
Baw Baw Latrobe Local Learning and Employment Network (LLEN)	<ul style="list-style-type: none"> <li>✓ Mentoring program with students from across Baw Baw and Latrobe Valley</li> <li>✓ Branding and communications</li> </ul>	Mar 2023 – October 2023	100+
Marinus Link First Peoples Advisory Group meeting #2	<ul style="list-style-type: none"> <li>✓ Project update and consultation</li> <li>✓ Underwater Cultural Heritage</li> </ul>	Mar 2023	12
Wellington Shire Council Forum	<ul style="list-style-type: none"> <li>✓ First Nations Employment Forum</li> </ul>	Mar 2023	30
Latrobe University Symposium (Participation only)	<ul style="list-style-type: none"> <li>✓ Underwater Cultural Heritage</li> </ul>	Mar 2023	200+
GippsTech meeting	<ul style="list-style-type: none"> <li>✓ Curriculum opportunities</li> </ul>	Apr 2023	3
Federation University workshop	<ul style="list-style-type: none"> <li>✓ Cooperative Industry and Learning</li> </ul>	Apr 2023	35
Committee for Gippsland (C4G) meeting	<ul style="list-style-type: none"> <li>✓ Landholder engagement</li> <li>✓ Partnering on Industry Participation Plan</li> </ul>	Apr 2023 (x2)	2
South Gippsland Shire Council meeting	<ul style="list-style-type: none"> <li>✓ Project update</li> </ul>	Apr 2023	N/A
VicGrid briefing	<ul style="list-style-type: none"> <li>✓ Project overview, alignment and engagement approach, community concerns and common issues.</li> </ul>	Apr 2023	N/A
Meeting with key First Peoples stakeholders in Tasmania on Underwater Cultural Heritage Assessment	<ul style="list-style-type: none"> <li>✓ Underwater Cultural Heritage</li> </ul>	Apr 2023	N/A

Activity	Details	Date (s)	Participation
Traralgon Secondary College Renewable Energy session	<ul style="list-style-type: none"> <li>Student career pathways</li> <li>Project update</li> </ul>	May 2023	12
Latrobe City Council Meeting	<ul style="list-style-type: none"> <li>Introduce EGM Project update</li> <li>Workforce and accommodation</li> </ul>	May 2023	N/A
South Gippsland Shire Council Meeting	<ul style="list-style-type: none"> <li>Introduce EGM Project update</li> <li>Workforce and</li> </ul>	May 2023	N/A
South Gippsland Bass Coast Local Learning and Employment Network	<ul style="list-style-type: none"> <li>Jobs of the Future Event and presentation</li> </ul>	May 2023	50
Energy Commissioner and VicGrid route drive	<ul style="list-style-type: none"> <li>Provide project update and overview and industry engagement</li> </ul>	May 2023	18
Boonwurrung Land and Sea Council meeting	<ul style="list-style-type: none"> <li>Consultation on Cultural Values Assessment</li> </ul>	May 2023	12
Marinus Link First Peoples Advisory Group route drive	<ul style="list-style-type: none"> <li>Project update, the alignment, construction, on and offshore cultural heritage investigations and engagement</li> </ul>	May 2023	15
Wellington Renewable Energy Forum	<ul style="list-style-type: none"> <li>Project update</li> <li>Collaboration opportunities</li> </ul>	May 2023	140+
Gippsland Community Benefits Sharing Working Group	<ul style="list-style-type: none"> <li>Regional focus to community benefits sharing</li> <li>Opportunities for collaboration</li> </ul>	May 2023	30
Australian Energy Infrastructure Commissioner and VicGrid route drive	<ul style="list-style-type: none"> <li>Project alignment</li> <li>Cultural Heritage</li> <li>Landholder engagement</li> <li>Environmental surveys and technical reports</li> </ul>	May 2023	15
South Gippsland Bass Coast local learning and Employment Network Jobs of the Future	<ul style="list-style-type: none"> <li>Career and job pathways</li> </ul>	May 2023	80+
GROW Gippsland meeting	<ul style="list-style-type: none"> <li>GROW update</li> <li>Energy transition</li> <li>Disability workshop</li> </ul>	June 2023	24
Landholder Meetings with Australian Energy Infrastructure Commissioner	<ul style="list-style-type: none"> <li>Pre-construction surveys</li> <li>Overview of possible impacts</li> <li>Compensation</li> </ul>	June 2023	12
Gippsland Stakeholder Liaison Group Meeting	<ul style="list-style-type: none"> <li>Project update</li> <li>Community Benefits Sharing</li> </ul>	June 2023	18
Energy Charter Roundtable	<ul style="list-style-type: none"> <li>Best practice engagement</li> <li>Social licence</li> </ul>	June 2023	25
Australian Renewables Academy Impact and Change Forum	<ul style="list-style-type: none"> <li>Community engagement in the renewable energy sector</li> <li>Understanding the unique needs and concerns of regional communities</li> <li>Building trust and fostering productive relationships with community stakeholders</li> </ul>	June 2023	12

Activity	Details	Date (s)	Participation
VicGrid meeting	<ul style="list-style-type: none"> <li>✓ Project updates</li> <li>✓ Landholder engagement</li> <li>✓ Compensation guidelines</li> </ul>	June 2023	N/A
South Gippsland Shire Council meeting	<ul style="list-style-type: none"> <li>✓ Workforce and Accommodation Strategy</li> <li>✓ Community sentiment and feedback</li> </ul>	July 2023	N/A
GROW Renewables workshop	<ul style="list-style-type: none"> <li>✓ Social procurement</li> <li>✓ Renewables transition</li> </ul>	July 2023	35
Gippsland Tech School Careers Advisors and Teacher presentation	<ul style="list-style-type: none"> <li>✓ Project update</li> <li>✓ Careers and job opportunities</li> <li>✓ Project timeframes</li> </ul>	July 2023	25
VicGrid meeting	<ul style="list-style-type: none"> <li>✓ Project updates</li> <li>✓ Landholder engagement</li> <li>✓ Compensation guidelines</li> </ul>	July 2023	N/A
Baw Baw Latrobe Local learning and Employment Network Job Skills Expo	<ul style="list-style-type: none"> <li>✓ Jobs and career pathways</li> </ul>	July 2023	480
Victoria Skills and Job Centre meeting	<ul style="list-style-type: none"> <li>✓ Transition of forestry and coal in Gippsland</li> <li>✓ Partnership opportunities</li> </ul>	August 2023	N/A
Department of Jobs, Skills, Industry and Regions meeting	<ul style="list-style-type: none"> <li>✓ Workforce and accommodation</li> <li>✓ Community Benefits Sharing</li> </ul>	August 2023	N/A
Churchill & District Community Association meeting	<ul style="list-style-type: none"> <li>✓ Project update and timelines</li> <li>✓ Traffic and converter station construction impacts</li> <li>✓ Landholder engagement</li> <li>✓ Job opportunities</li> </ul>	August 2023	18
Federation University Open Day	<ul style="list-style-type: none"> <li>✓ Career pathways</li> <li>✓ Project information</li> </ul>	August 2023	
Gippsland Stakeholder Liaison Group meeting	<ul style="list-style-type: none"> <li>✓ Project update</li> <li>✓ Industry Participation Plan</li> <li>✓ Engagement program</li> </ul>	August 2023	18
Gippsland Tech School Science Week Open Night	<ul style="list-style-type: none"> <li>✓ Career pathways</li> <li>✓ Project alignment</li> <li>✓ Project information</li> </ul>	August 2023	45
Department Environment, Energy and Climate Action's First Peoples Self Determination Unit meeting	<ul style="list-style-type: none"> <li>✓ First Peoples engagement approach</li> </ul>	August 2023	N/A
Australian Chamber of Commerce and Industry dinner	<ul style="list-style-type: none"> <li>✓ Project presentation</li> </ul>	August 2023	150+
VicGrid meeting	<ul style="list-style-type: none"> <li>✓ Project update</li> <li>✓ Landholder engagement</li> <li>✓ Compensation guidelines</li> </ul>	August 2023	N/A
Gippsland New Energy Conference	<ul style="list-style-type: none"> <li>✓ Underwater Cultural Heritage presentation</li> <li>✓ First Peoples engagement</li> <li>✓ Gender equity in renewables, transmission in storage</li> </ul>	August 2023	500+

Activity	Details	Date (s)	Participation
Casey Technical School	<ul style="list-style-type: none"> <li>✓ Jobs</li> <li>✓ Career pathways</li> <li>✓ Gippsland renewable transition</li> </ul>	September 2023	32
Gippsland Procurement Power Initiative program launch	<ul style="list-style-type: none"> <li>✓ Industry development and collaboration</li> </ul>	September 2023	40
Australian Energy Market Commission meeting	<ul style="list-style-type: none"> <li>✓ Engagement rule change</li> </ul>	September 2023	N/A
Gippsland Community Benefits Sharing Working Group	<ul style="list-style-type: none"> <li>✓ Regional focus to benefits</li> <li>✓ Collaboration opportunities</li> </ul>	September 2023	30
Energy Water Ombudsman meeting	<ul style="list-style-type: none"> <li>✓ Complaints handling process</li> </ul>	September 2023	N/A
South Gippsland Bass Coast Local Learning and Employment Network Jobs of the Future	<ul style="list-style-type: none"> <li>✓ Career and job pathways</li> </ul>	September 2023	80+
The Energy Charter Ag+ Energy Social Licence Roundtable	<ul style="list-style-type: none"> <li>✓ Stakeholder engagement</li> <li>✓ Social licence workshop</li> </ul>	September 2023	25
South Gippsland Shire Council meeting	<ul style="list-style-type: none"> <li>✓ Community benefits sharing</li> <li>✓ Workforce accommodation planning</li> <li>✓ First Peoples Participation Plan</li> <li>✓ Landholder engagement</li> </ul>	October 2023	N/A
Transform Expo Gippsland	<ul style="list-style-type: none"> <li>✓ Positive transition to renewable energy</li> <li>✓ Climate change</li> <li>✓ Jobs</li> </ul>	October 2023	50+
Energy, Water Ombudsman meeting	<ul style="list-style-type: none"> <li>✓ Project update</li> </ul>	October 2023	N/A
VicGrid meeting	<ul style="list-style-type: none"> <li>✓ Landholder engagement</li> <li>✓ Transmission discussion</li> </ul>	November 2023	N/A
Consumer Advisory Panel meeting	<ul style="list-style-type: none"> <li>✓ Community Benefits Sharing Program</li> </ul>	November 2023	20
Graduation of Baw Baw Latrobe Local Learning and Employment Network New Energy Transition (NET) Program	<ul style="list-style-type: none"> <li>✓ Mentoring program</li> <li>✓ Career pathways</li> <li>✓ Energy transition advocacy</li> </ul>	November 2023	20+
South Gippsland Bass Coast LLEN & Country Universities Centre Speed Career Conversations	<ul style="list-style-type: none"> <li>✓ Career pathways</li> <li>✓ Project overview and job opportunities</li> </ul>	November 2023	100
South Gippsland Shire Council meeting	<ul style="list-style-type: none"> <li>✓ Project update</li> <li>✓ Local job and industry opportunities</li> </ul>	November 2023	N/A
Evaluating Undergrounding Transmission: Consideration Framework Co-design Workshop 1	<ul style="list-style-type: none"> <li>✓ Stakeholder engagement</li> <li>✓ Social licence workshop</li> </ul>	December 2023	N/A

Activity	Details	Date (s)	Participation
Energy Charter Better Practice Social Licence Guideline: 6 month accountability check in	<ul style="list-style-type: none"> <li>✓ Stakeholder engagement</li> <li>✓ Landholder engagement</li> <li>✓ Community benefits sharing</li> <li>✓ Social licence</li> </ul>	December 2023	N/A
Federation University meeting	<ul style="list-style-type: none"> <li>✓ Workforce planning</li> <li>✓ Apprenticeship opportunities</li> <li>✓ Sponsorship and scholarship opportunities</li> </ul>	December 2023	N/A
Vic Energy Communications & Engagement Coordination meeting	<ul style="list-style-type: none"> <li>✓ Community engagement</li> <li>✓ Stakeholder engagement</li> <li>✓ Project update</li> </ul>	December 2023	10+
Churchill Community Market pop-up information stall	<ul style="list-style-type: none"> <li>✓ Collaborated with Aus Energy</li> <li>✓ Project timing</li> <li>✓ Design and approval requirements</li> <li>✓ Public Exhibition period</li> </ul>	December 2023	42
Promontory Craft and Produce Market (attended with VicGrid)	<ul style="list-style-type: none"> <li>✓ Project timing</li> <li>✓ Job opportunities during construction</li> <li>✓ Potential impacts</li> <li>✓ Public Exhibition period</li> </ul>	December 2023	76
<b>Total interactions</b>			<b>3250</b>

### 3.4 Engagement activities – Tasmania

Engagement activities during Phase 3 in Tasmania comprised a range of face-to-face and digital or online opportunities to ensure stakeholders and the community could engage with the project, learn about its impacts and benefits, and provide feedback directly to the project team. These are outlined in Table 6 below

Table 6 Timeline if key Phase 3 engagement activities in Tasmania

Timing	Activities
September 2022	<ul style="list-style-type: none"> <li>✓ Community newsletter.</li> <li>✓ Sulphur Creek drop-in information session (near Heybridge).</li> <li>✓ Burnie Farmers Market pop-up information stall.</li> </ul>
October 2022	<ul style="list-style-type: none"> <li>✓ Burnie Show and Agri Expo pop-up information stall.</li> <li>✓ South East Trawl Fishing Industry Association presentation.</li> <li>✓ Meeting with Burnie City Council.</li> <li>✓ Meeting with Central Coast Council.</li> </ul>
November 2022	<ul style="list-style-type: none"> <li>✓ ICT Conference Hobart pop-up information stall</li> <li>✓ Rotary Club of Burnie presentation</li> <li>✓ NWTD Meet the Projects presentation</li> <li>✓ Meeting with Burnie City Council</li> <li>✓ Meetings with Business North West and Launceston Chamber of Commerce</li> </ul>
December 2022	<ul style="list-style-type: none"> <li>✓ Community newsletter.</li> <li>✓ Burnie Farmers Market pop-up information stall.</li> <li>✓ Launceston industry and stakeholder breakfast.</li> <li>✓ Regional Development Australia presentation.</li> </ul>

Timing	Activities
March 2023	<ul style="list-style-type: none"> <li>➤ Tasmania Aboriginal Centre meetings.</li> <li>➤ Community newsletter.</li> <li>➤ Devonport industry and stakeholder breakfast.</li> <li>➤ Burnie drop-in information sessions.</li> </ul>
April 2023	<ul style="list-style-type: none"> <li>➤ Community and stakeholder webinar.</li> <li>➤ Meeting with Aboriginal Heritage Tasmania.</li> </ul>
June 2023	<ul style="list-style-type: none"> <li>➤ Burnie City Council meeting.</li> <li>➤ Presentations to First Peoples groups.</li> </ul>

### 3.5 Landholder engagement

The project's proposed route in Victoria encompasses approximately 90 km of agricultural, bushland and forestry landscapes, comprising private, Crown and forestry land parcels. The project requires access to these different parcels for environmental, cultural heritage and geotechnical surveys, and an easement to lay and operate the proposed transmission infrastructure.

Engagement with landholders potentially impacted by the project began in November 2020 and will be ongoing during the project's construction and operation.

Each landholder has a dedicated land agent who is the main point of contact for information about the project. Land Agents are responsible for ensuring landholders understand the project, potential impacts, proposed mitigations and how the project might impact their land.

Engagement with landholders has focused on obtaining access to property for survey activities and micro-siting the route to accommodate current and future land-use activities.

A range of communication materials, also available on the Marinus Link website, have been provided to landholders including:

- Landholder Information Pack
- Land Access and Easement Acquisition fact sheet.

Between November 2020 and December 2023, MLPL engaged regularly with landholders via face-to-face and virtual meetings, letters, phone calls and emails.

The project continues to engage with potentially impacted landholders to micro-site the route and collaborate with them on their individual Property Management Plans.



## 3.6 First Peoples

The following sections provide a summary of MLPL's approach to engagement with First Peoples in Victoria and Tasmania. MLPL have sought a best practice approach to engagement with First Peoples, acknowledging the critical role that First Peoples have in the conservation and sustainable use of the landscape.

### 3.6.1 Victoria

Early in the project, MLPL sought advice from FPSR regarding the First Peoples groups in the Gippsland region that may have an interest in the project area, with a focus on the shared country in the southern portion of the project alignment. Three First Peoples groups were identified:

- Boonwurrung Land and Sea Council
- Bunurong Land Council Aboriginal Corporation
- Gunaikurnai Land and Waters Aboriginal Corporation (GLaWAC).

In mid-2022 MLPL hired First Peoples Engagement Advisors to lead engagement with the three First Peoples groups listed above. These roles are embedded within the engagement team and support a range of activities including the formation and management of a First Peoples Advisory Group and the development of the First Peoples Engagement Plan.

Through connections with each First Peoples group, representatives were identified and nominated by each group to take part in the First Peoples Advisory Group with MLPL. The First Peoples Advisory Group met formally four times between late 2022 and mid-2023. The group also provided advice on MLPL's Cultural Heritage works and inputs into key strategies and plans for the project. Meaningful and open discussions were held on topics such as cultural heritage values on land and across Bass Strait, community benefits, workforce participation, and Native Title.

The First Peoples Advisory Group ceased meetings in mid-2023 following consultation with the First Peoples groups, and in light of current legal proceedings relating to Native Title. While the advisory group has not continued, MLPL through their First Peoples Engagement Advisors have continued consultation and discussions with the three First Peoples groups separately, with ongoing engagement activities including cultural education sessions for MLPL personnel, progression of cultural values assessments, and general project updates.

It is intended that broader engagement on the EIS/EES throughout 2024 will provide opportunities for MLPL to connect with broader community, including First Peoples not connected to one of the three identified First Peoples groups.

As a Registered Aboriginal Party, GLaWAC were invited to participate in the Technical Reference Group convened by DTP as part of the standard EES assessment process in Victoria (see Section 1.7).

## 3.6.2 Tasmania

In Tasmania MLPL has engaged with Aboriginal Heritage Tasmania, and commenced engagement with members of the Tasmanian Aboriginal Centre. MLPL has met with truwana Rangers and Community leaders, and is committed to further ongoing meaningful engagement in Tasmania.

In 2023, MLPL had proposed to establish a Tasmanian equivalent of the First Peoples Advisory Group. However, upon advice from Aboriginal Heritage Tasmania and stakeholders from within the Tasmanian Aboriginal community, it was agreed that a different approach to First Peoples engagement in Tasmania was more suitable. Since then, MLPL has discussed a collaborative approach to First Peoples engagement with other major project proponents and organisations (e.g. Renewables, Climate and Future Industries Tasmania (RECFIT), Hydro Tasmania, North West Transmission Development projects) to plan coordinated engagement that is both culturally appropriate and addresses the needs of the Tasmanian Community. Further discussions with stakeholders have advised that a state-wide and collaborative engagement approach is appropriate for First Peoples engagement in Tasmania.

## 3.7 Gippsland Stakeholder Liaison Group

MLPL established the project's Gippsland Stakeholder Liaison Group (GSLG) in November 2021, providing a forum for regular communication and engagement between the project and key stakeholders. The GSLG is an advisory body that aims to enable:

- ✓ Updates and information on the environmental assessment and approvals phase of the project to be provided to key stakeholder groups.
- ✓ Input into project initiatives to maximise potential benefits.
- ✓ Stakeholders to raise concerns and discussion points on behalf of the organisations or communities they represent.

The GSLG comprises representatives from:

- ✓ South Gippsland Shire Council
- ✓ Latrobe City Council
- ✓ Gunaikurnai Land and Waters Aboriginal Corporation
- ✓ TAFE Gippsland
- ✓ Committee for Gippsland
- ✓ Latrobe Valley Authority
- ✓ West Gippsland Catchment and Management Authority
- ✓ Gippsland Trades and Labour Council
- ✓ Federation University

- South Gippsland Landcare Network
- GROW Gippsland.

During Phase 3, the GSLG met six times, generally online except for one site tour in February 2023 which aimed to familiarise members with the route, project constraints and potential impacts, and to obtain member feedback on proposed mitigations to those impacts.

## 4 What we've heard

This section provides a summary of interests and concerns raised during Phase 3 engagement. Some feedback related to the entire project, and other feedback was related to a specific local area or individual property. All comments were analysed, and the following high-level themes identified:

- Construction impacts and amenity
- Land access
- Agriculture
- Ecology
- Groundwater and surface water
- Marine
- First Peoples and cultural heritage
- Project design and constructability
- Community benefits and impacts
- Project information.

The project route has been divided into the following areas to identify which communities provided certain feedback:

- Hazelwood and Churchill: the project's 's converter station in Victoria will be built on Tramway Road in Hazelwood, in the Latrobe Valley. This location is adjacent to the existing Hazelwood Terminal Station and associated electricity transmission network. The underground HVDC land cable will be connected to the existing HVAC transmission network via this converter station.
- Driffield, Mirboo North and Mardan: The proposed route travels west from Hazelwood, through the plantation area at Driffield, before turning south-west to the east of Mirboo North, and on to Mardan.
- Dumbalk, Meeniyan and Buffalo: The proposed route travels south-west from Mardan to the west of Dumbalk, east of Meeniyan and to Buffalo.

- Fish Creek and Sandy Point: The proposed route travels south-west from its location east Buffalo, before travelling south east to the shore crossing area at Waratah Bay.
- Shore crossing and Bass Strait: The proposed route travels south-west from the shore crossing area at Waratah Bay into Bass Strait.
- Heybridge: the project's converter station in Tasmania will be built on Minna Road in Heybridge, north-west Tasmania. This location is a former industrial site.

## 4.1 Feedback and responses - Victoria

The below tables summarise the response to key issues raised by each theme. Each of the EIS/EES impact assessment reports also includes key issues and concerns raised by communities and stakeholders and outlines how these have been considered.

Table 7 Feedback and responses – construction impacts and amenity

Interests or concerns raised	Project response	Locations	Technical reports
<p>Concerns about noise and vibration from the converter station during construction and operation, particularly in light of the decommissioning of Hazelwood Power Station and associated reduction to local noise.</p>	<ul style="list-style-type: none"> <li>➤ Noise modelling undertaken by the project indicates that noise levels from the converter station for nearby properties will likely be unnoticeable and will not exceed background levels.</li> <li>➤ The majority of construction activities will take place during the day and night works will be avoided where possible.</li> <li>➤ The project will prepare a Construction Noise and Vibration Management Plan, outlining how potential impacts will be minimised and managed.</li> </ul>	<p>Hazelwood Churchill</p>	<p>Technical Appendix T: Noise and Vibration</p>
<p>Concerns about construction noise, particularly associated with horizontal directional drilling (HDD) if it needs to continue outside normal construction hours.</p>	<ul style="list-style-type: none"> <li>➤ Most construction activities will take place during normal working hours. Out of hours works will be limited to unavoidable activities and those activities which cannot be stopped once they have started such as HDD or pouring concrete.</li> </ul>	<p>Driffield, Mirboo North &amp; Mardan Dumbalk, Meeniyah &amp; Buffalo Fish Creek and Sandy Point</p>	<p>Technical Appendix T: Noise and Vibration</p>
<p>Concerns about noise associated with potential ongoing horizontal directional drilling (HDD) of the shore crossing at Waratah Bay.</p>	<ul style="list-style-type: none"> <li>➤ The project will prepare a Construction Noise and Vibration Management Plan, in consultation with the EPA, which will include details on how impacts will be managed. Noise monitoring will occur during any out of hours works to ensure noise levels do not exceed relevant thresholds.</li> </ul>		
<p>Concerns about the visual impact of the converter station at Hazelwood.</p>	<ul style="list-style-type: none"> <li>➤ The preferred converter station site is located adjacent to the Hazelwood Transfer Station and existing transmission infrastructure.</li> <li>➤ Landscaping is proposed to screen the converter station and reduce impacts to visual amenity.</li> </ul>	<p>Hazelwood &amp; Churchill</p>	<p>Technical Appendix R: Landscape and Visual</p>

Interests or concerns raised	Project response	Locations	Technical reports
<p>Concerns about dust and air quality impacts from heavy vehicles.</p> <p>Concerns/ interest about the proposed construction methodology. Concerns about trenching were primarily about impacts to the environment where as concerns about Horizontal Directional Drilling (HDD) were primarily about noise should the activity need to happen continuously.</p>	<ul style="list-style-type: none"> <li>The majority of residents in the vicinity of the project alignment are more than 300 m from the works area, so dust is not expected to present any risks to human health.</li> <li>Measures will be implemented to reduce impacts to the environment and nearby properties. This includes preparation of a Construction Dust Management Plan detailing how dust will be reduced and managed.</li> </ul>	<p>Dumbalk, Meeniyah and Buffalo</p>	<p>Technical Appendix L: Air Quality</p>
<p>General concerns about construction impacts, and the mitigations MLPPL proposes to use to limit these.</p> <p>Concerns/ interest about the proposed construction methodology. Concerns about trenching were primarily about impacts to the environment where as concerns about Horizontal Directional Drilling (HDD) were primarily about noise should the activity need to happen continuously.</p>	<ul style="list-style-type: none"> <li>Some construction impacts will be expected for local communities. The project will be required to prepare relevant management plans to outline how impacts will be managed and mitigated. Community feedback will be used to inform appropriate mitigation measures wherever possible.</li> <li>The cables will be installed using open trenching wherever possible. HDD will be used when the project alignment needs to cross rivers, environmentally sensitive areas, railways, roads or utility services.</li> </ul>	<p>Driffield, Mirboo North &amp; Mardian Dumbalk, Meeniyah &amp; Buffalo</p>	<p>Technical Appendix W: Traffic and Transport Technical Appendix T: Noise and Vibration Technical Appendix S: Land Use and Planning Technical Appendix R: Landscape and Visual</p>
<p>Concerns were raised about the cumulative impacts of the increased volume of heavy vehicle traffic on Tramway Road, Hazelwood, due to the construction and operation of the project's converter station, and the existing or proposed industrial infrastructure and businesses in that area.</p>	<ul style="list-style-type: none"> <li>MLPL acknowledges the importance to the community and local businesses of efficient and safe traffic movement throughout the local area.</li> <li>The project will develop tailored Traffic Management Plans specific to each work</li> </ul>	<p>Hazelwood Churchill</p>	<p>Technical Appendix W: Traffic and Transport Technical Appendix U: Social</p>

**Interests or concerns raised**      **Project response**      **Locations**      **Technical reports**

Concerns about the increase of traffic and heavy vehicles in townships and along local roads, as well as impacts of detour routes and other traffic management measures.

- area, to mitigate disruption and manage safety, during construction.
- A road transport plan will be designed to allow for different traffic levels and conditions, upgrading roads and crossings where required, and ensuring that pedestrian and vehicle access is reinstated in line with road design standards.
- Local roads will be avoided where possible during construction.
- Road closures will be avoided, but access may be limited during peak construction times.

All

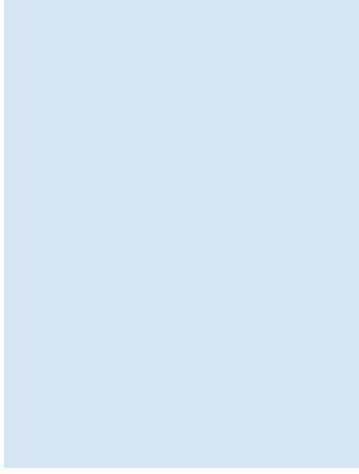


Table 8 Feedback and responses – land access

Interests or concerns raised	Project response	Locations	Technical reports
<p>Concerns about the process for establishing individual landholder compensation, amounts, and the process for voluntary vs. compulsory acquisition of easements.</p>	<ul style="list-style-type: none"> <li>MLPL is working closely with all directly impacted landholders to understand their current and future land uses.</li> <li>Compensation is calculated on a case-by-case basis. MLPL will follow legislation under the Land Acquisition and Compensation Act 1986 and the Victorian Government guidelines for additional compensation.</li> <li>MLPL is developing its easement compensation framework and will negotiate outcomes with individual landholders.</li> </ul>	<p>Driffield, Mirboo North &amp; Mardan Dumbalk, Meeniyah &amp; Buffalo Fish Creek and Sandy Point</p>	<p>Technical Appendix K: Agriculture and Forestry Technical Appendix S: Land Use and Planning</p>
<p>Concerns about the impact to property values and the process for easement creation.</p>			
<p>Concerns about impacts to short and long-term impacts land use</p>			
<p>Concerns about the process to develop and agree on farm management plans on individual properties.</p>	<ul style="list-style-type: none"> <li>MLPL acknowledges that every property is unique and is committed to working with impacted landholders to develop and agree on individual property management plans to the satisfaction of all parties.</li> </ul>	<p>Dumbalk, Meeniyah &amp; Buffalo</p>	
<p>Concerns about future easement ownership, access by other projects or infrastructure.</p>	<ul style="list-style-type: none"> <li>The project is currently being funded and administered by the Commonwealth, Victorian and Tasmanian Governments. As a regulated service there are a range of future ownership options open to MLPL. The preferred model will be a matter for government owners to resolve.</li> </ul>	<p>Driffield, Mirboo North &amp; Mardan Dumbalk, Meeniyah &amp; Buffalo</p>	
<p>Concerns about the re-instatement process on private properties of the easement post construction.</p>	<ul style="list-style-type: none"> <li>Easements will be reinstated to as good or better condition wherever possible, in line with individual Property Management Plans.</li> <li>MLPL is working with landholders who wish to keep access roads and fencing installed by the project.</li> </ul>	<p>Dumbalk, Meeniyah &amp; Buffalo</p>	



Interests or concerns raised	Project response	Locations	Technical reports
<p>Landholders were interested in potential improvements to the communication and engagement process in the coming months, including frequency and detailed information on compensation.</p>	<ul style="list-style-type: none"> <li>MLPL is committed to working closely with all impacted landholders throughout the project lifecycle and has dedicated Land Agents in place to manage direct communications.</li> <li>MLPL is developing its easement compensation framework and will negotiate outcomes with individual landholders from late 2023.</li> <li>The project will use feedback about communication and engagement processes to refine the approach going forward.</li> </ul>	<p>Driffield, Mirboo North &amp; Mardan Dumbalk, Meeniyan &amp; Buffalo Fish Creek and Sandy Point</p>	
<p>Concern about how landholder information will be recorded, protected and handed over.</p>	<ul style="list-style-type: none"> <li>MLPL has a dedicated Land Agent team that manages the recording of information provided by landholders.</li> <li>The project is covered by and complies with TasNetwork's Privacy Policy and its associated obligations under The Privacy Act 1988 (Cwth) (Privacy Act) and the Personal Information Protection Act 2004 (Tas) (PIP Act).</li> </ul>	<p>Dumbalk, Meeniyan &amp; Buffalo</p>	

Table 9 Feedback and responses – agriculture

Interests or concerns raised	Project response	Locations	Technical reports
<p>Concerns about impacts to local farmers' organic certification during construction and operation.</p>	<ul style="list-style-type: none"> <li>MLPL engaged with organic certification bodies in Victoria to seek feedback on and input into the project's proposed construction methodology. Certification bodies will work with landholders and MLPL to ensure certification is not impacted by the project.</li> <li>MLPL is working closely with all directly impacted landholders to understand their current and future land uses, and micro-siting requirements, and develop individual Property Management Plans to reduce impacts to production.</li> </ul>	<p>Drifffield, Mirboo North &amp; Mardan Dumbalk, Meeniyan &amp; Buffalo</p>	<p>Technical Appendix K: Agriculture and Forestry Technical Appendix S: Land Use and Planning Technical Appendix N: Contaminated Land and Acid Sulfate Soils</p>
<p>Concerns about biosecurity impacts during construction and operation.</p>	<ul style="list-style-type: none"> <li>Biosecurity is taken very seriously and any concerns and/or biosecurity protocols and procedures that individual landholders have in place will be documented and followed as a condition of property access during all phases of the project.</li> <li>MLPL will work with landholders to develop individual Property Management Plans that will include things like hygiene requirements, location of access points and parking areas.</li> </ul>	<p>Drifffield, Mirboo North &amp; Mardan Dumbalk, Meeniyan &amp; Buffalo</p>	<p>Technical Appendix K: Agriculture and Forestry Technical Appendix S: Land Use and Planning Technical Appendix N: Contaminated Land and Acid Sulfate Soils</p>
<p>Concerns about impacts to agricultural production during construction and operation.</p>	<ul style="list-style-type: none"> <li>MLPL is working closely with all directly impacted landholders to understand their current and future land uses, and micro-siting requirements.</li> <li>Individual Property Management Plans will be developed with directly impacted landholders to mitigate impacts and maintain production.</li> <li>MLPL is engaging with the broader agricultural industry to identify and manage potential impacts during construction to commercial farming in the Gippsland region.</li> </ul>	<p>Drifffield, Mirboo North &amp; Mardan</p>	<p>Technical Appendix K: Agriculture and Forestry Technical Appendix S: Land Use and Planning Technical Appendix U: Social Technical Appendix N: Contaminated Land and Acid Sulfate Soils</p>

Interests or concerns raised	Project response	Locations	Technical reports
<p>Concerns about potential impacts to agricultural production during operation, due to the heat of underground cables.</p>	<ul style="list-style-type: none"> <li>✓ Where possible, MLPL has sited cable toward the back of properties away from cropping areas.</li> <li>✓ Any impact to long-term crop growing will be considered as part of the easement compensation process.</li> </ul>	<p>Driffield, Mirboo North &amp; Mardan Dumbalk, Meeniyan &amp; Buffalo</p>	<p>Technical Appendix K: Agriculture and Forestry Technical Appendix S: Land Use and Planning Technical Appendix A: Electromagnetic Fields</p>
<p>Concerns about the impacts of EMF on stock tagging, electric fences and soil temperature.</p>	<ul style="list-style-type: none"> <li>✓ The project is not expected to generate EMF above levels that already exist in the local environment, as the cable sheath and underground location of the cables will limit the amount of EMF produced.</li> <li>✓ The EMF levels from standard wiring in farm sheds will likely be higher than that of the project.</li> </ul>	<p>Driffield, Mirboo North &amp; Mardan</p>	<p>Technical Appendix A: Electromagnetic Fields</p>

Table 10 Feedback and responses – ecology

Interests or concerns raised	Project response	Locations	Technical reports
Concerns about cumulative ecological impacts given other projects in the Gippsland region.	<ul style="list-style-type: none"> <li>✓ MLPL is committed to minimising disturbance to vegetation and fauna.</li> <li>✓ Mitigation measures have been identified to minimise potential ecological impacts as a result of the project.</li> <li>✓ Underground horizontal Directional Drilling (HDD) will be used where feasible during construction to minimise vegetation loss.</li> <li>✓ The project will prepare Vegetation and Fauna Management plans, as part of the overall Construction Environmental Management Plan.</li> </ul>	Hazelwood & Churchill	<p>Technical Appendix K: Agriculture and Forestry</p> <p>Technical Appendix N: Contaminated Land and Acid Sulfate Soils</p> <p>Technical Appendix O: Geomorphology and Geology</p> <p>Technical Appendix P: Groundwater</p> <p>Technical Appendix U: Social</p> <p>Technical Appendix V: Terrestrial Ecology</p>
Concerns about bushfire management given the project's interface with timber plantations.	<ul style="list-style-type: none"> <li>✓ The project will prepare and implement a Bushfire Emergency Management Plan.</li> </ul>	Hazelwood Churchill	Technical Appendix M: Bushfire
Concerns about impacts to fauna in the Strzelecki Ranges and Mirboo North area.	<ul style="list-style-type: none"> <li>✓ Fauna management measures will be implemented to mitigate impacts in all areas where works are taking place.</li> <li>✓ The project will prepare Fauna Management plans, as part of the overall Construction Environmental Management Plan.</li> </ul>	Driffield, Mirboo North & Mardan	Technical Appendix V: Terrestrial Ecology
Concerns about vegetation removal and general ecology impacts along the proposed route.	<ul style="list-style-type: none"> <li>✓ MLPL is committed to minimising vegetation removal and disturbance, and habitat fragmentation and loss.</li> <li>✓ The project will prepare Vegetation and Fauna Management plans, as part of the overall Construction Environmental Management Plan.</li> <li>✓ Underground horizontal Directional Drilling (HDD) will be used where feasible during construction to minimise vegetation loss.</li> </ul>	Driffield, Mirboo North & Mardan Dumbalk, Meeniyon & Buffalo	<p>Technical Appendix V: Terrestrial Ecology</p> <p>Technical Appendix S: Land Use and Planning</p>

Interests or concerns raised	Project response	Locations	Technical reports
<p>Concern about the project's environmental and coastal impacts to Waratah Bay.</p>	<ul style="list-style-type: none"> <li>Significant ecology impacts are not expected, with the shore crossing alignment selected to minimise interface with key marine and onshore habitat areas.</li> </ul>	<p>Fish Creek and Sandy Point</p>	<p>Technical Appendix V: Terrestrial Ecology            Technical Appendix G: Benthic Ecology</p>
<p>Concerns about potential impacts to Hooded Plovers on Waratah Bay Beach.</p>	<ul style="list-style-type: none"> <li>MLPL will reduce environmental impacts to the dunes, beach and any flora and fauna in the shore crossing area by using horizontal directional drilling.</li> </ul>		<p>Technical Appendix H: Marine Ecology and Resource Use            Technical Appendix I: Underwater Cultural Heritage and Archaeology</p>
<p>Concern about the construction methodology, particularly the horizontal directional drilling beneath the sand dunes, and the subsea construction approach.</p>	<ul style="list-style-type: none"> <li>MLPL will develop Vegetation and Fauna Management Plans.</li> </ul>		<p>Technical Appendix R: Landscape and Visual            Technical Appendix T: Noise and Vibration            Technical Appendix J: Aboriginal and Historical Cultural Heritage</p>

Table 11 Feedback and responses – groundwater and surface water

Interests or concerns raised	Project response	Locations	Technical reports
<p>Concerns about previous flooding on the Yinnar / Morwell River flood plains and potential flooding impacts to the project.</p>	<ul style="list-style-type: none"> <li>✓ The project will prepare a Surface Water Management Plan that details how impacts to flood risks and potential sediment, or contamination run off will be avoided and managed.</li> <li>✓ Modelling will be undertaken to ensure that construction activities and project assets do not increase the flood risk.</li> </ul>	<p>Hazelwood &amp; Churchill</p>	<p>Technical Appendix Q: Surface Water            Technical Appendix P: Groundwater</p>
<p>Concerns about potential impacts to the water quality of natural springs and large underground aquifers in the area.</p>	<ul style="list-style-type: none"> <li>✓ MLPL acknowledges that ground and surface water is an important source for both people and the surrounding environment.</li> <li>✓ The project will prepare Surface Management and Groundwater Management plans that detail how impacts will be avoided or managed.</li> </ul>	<p>Driffield, Mirboo North &amp; Mardan</p>	<p>Technical Appendix P: Groundwater            Technical Appendix Q: Surface Water            Technical Appendix K: Agriculture and Forestry            Technical Appendix N: Contaminated Land and Acid Sulfate Soils</p>
<p>Concerns about the project's constructability in low lying areas, and the impacts of waterlogged soils during the wet season.</p>	<ul style="list-style-type: none"> <li>✓ Construction contractors will be required to prepare a site management plans which will include mitigation approaches to manage ground disturbance during wet periods.</li> </ul>	<p>Driffield, Mirboo North &amp; Mardan</p>	<p>Technical Appendix P: Groundwater            Technical Appendix Q: Surface Water            Technical Appendix K: Agriculture and Forestry</p>

Table 12 Feedback and responses – marine and fisheries

Interests or concerns raised	Project response	Locations	Technical reports
Concerns about the impacts to water quality, marine ecology and disturbance of the seabed from benthic sampling and construction.	<ul style="list-style-type: none"> <li>Significant ecology impacts are not expected, with the shore crossing alignment selected to minimise interface with key marine and onshore habitat areas.</li> </ul>	Bass Strait Fish Creek and Sandy Point	Technical Appendix J: Aboriginal and Historical Cultural Heritage Technical Appendix I: Underwater Cultural Heritage and Archaeology
Concerns about the impact to marine life during construction.	<ul style="list-style-type: none"> <li>The project's construction methods will be confirmed through detailed design, with contractors required to adhere to all safety requirements.</li> </ul>		Technical Appendix G: Benthic Ecology Technical Appendix A: Electromagnetic Fields
Concerns about the impacts to whales in Waratah Bay during construction.			
Concerns about the impact of EMF on marine life during operation.			
Concerns about the impact of EMF on marine life during operation.	<ul style="list-style-type: none"> <li>EMF emissions will be within relevant guidelines and comparable with that of the existing Basslink cables.</li> </ul>	Bass Strait	Technical Appendix T: Noise and Vibration Technical Appendix G: Benthic Ecology
Concerns about fishing methods near the subsea cable.	<ul style="list-style-type: none"> <li>The proposed subsea cable route was selected based on a range of criteria, including the avoidance major fishing grounds to minimise impacts to the fishing industry.</li> </ul>	Bass Strait	Technical Appendix G: Benthic Ecology Technical Appendix I: Underwater Cultural Heritage and Archaeology
Concern about disturbance of the seabed impacting on marine water quality.	<ul style="list-style-type: none"> <li>The proposed methodology for laying the subsea cables is expected to cause minimal physical disturbance to the seabed.</li> </ul>		
Concerns about impacts on the Victorian Recreational Code of Conduct during construction.	<ul style="list-style-type: none"> <li>MLPL will engage with key fishery stakeholders including Commonwealth, State and local fishing industry bodies, to create a code of conduct to guide the ongoing management of fishing activities near the undersea cable, including preferred fishing methods.</li> </ul>		

Interests or concerns raised	Project response	Locations	Technical reports
<p>Concerns about navigation safety during construction.</p>	<ul style="list-style-type: none"> <li>✓ MLPL will continue to engage with these groups and the fishing industry throughout the project lifecycle.</li> <li>✓ MLPL will work with the Australian Maritime Safety Authority, Marine and Safety Tasmania and other fishery stakeholders to broadcast safety information prior to construction activities taking place.</li> </ul>		



Table 13 Feedback and responses – First Peoples and cultural heritage

Interests or concerns raised	Project response	Locations	Technical reports
<p>Concern that MLPL wasn't engaging with Traditional Owners or undertaking adequate Aboriginal Cultural Heritage investigations.</p>	<ul style="list-style-type: none"> <li>✓ MLPL recognises and respects the history, culture and stories that First Peoples bring to our communities, and acknowledge that they have a profound spiritual connection to the lands and waters on which the project is proposed to be built.</li> <li>✓ MLPL has dedicated Aboriginal Engagement Advisors to direct and deliver engagement with regional First Peoples groups.</li> <li>✓ The project is undertaking site walkovers with Traditional Owners to inform the development of a Cultural Heritage Management Plan.</li> <li>✓ MLPL has established a First Peoples Advisory Group.</li> </ul>	<p>Hazelwood &amp; Churchill Driffield, Mirboo North &amp; Mardan Fish Creek and Sandy Point</p>	<p>Technical Appendix J: Aboriginal and Historical Cultural Heritage</p> <p>Technical Appendix F: Heybridge Social Assessment</p> <p>Technical Appendix U: Social</p>
<p>Long-term jobs and careers for their communities and opportunities for higher-skilled careers.</p>	<ul style="list-style-type: none"> <li>✓ MLPL is developing an Industry Participation and Social Inclusion Plan that will consider immediate job opportunities for First Peoples and opportunities to upskill communities.</li> </ul>	<p>First Peoples Advisory Group (October 2022 to May 2023)</p>	<p>Technical Appendix F: Heybridge Social Assessment</p> <p>Technical Appendix U: Social</p>
<p>More information is required on construction timeframes and workforce requirements.</p>	<ul style="list-style-type: none"> <li>✓ MLPL has provided expected project timeframes and job requirements to the First Peoples Advisory Group.</li> </ul>	<p>First Peoples Advisory Group (October 2022 to May 2023)</p>	<p>N/A</p>
<p>First Peoples participation should focus on local opportunities in Gippsland more than the rest of Australia.</p>	<ul style="list-style-type: none"> <li>✓ MLPL will consider local opportunities as part of the Industry Participation and Social Inclusion Plan.</li> </ul>	<p>First Peoples Advisory Group (October 2022 to May 2023)</p>	<p>Technical Appendix F: Heybridge Social Assessment</p> <p>Technical Appendix U: Social</p>
<p>The project should consider funding scholarships to support long-term opportunities outside project.</p>	<ul style="list-style-type: none"> <li>✓ MLPL will consider scholarships and training opportunities as part of the community benefits sharing schemes.</li> </ul>	<p>First Peoples Advisory Group (October 2022 to May 2023)</p>	<p>Technical Appendix F: Heybridge Social Assessment</p> <p>Technical Appendix U: Social</p>

Interests or concerns raised	Project response	Locations	Technical reports
<p>Communication must consider the preferences of First Peoples and the project should consider ways of informing First Peoples outside the advisory group.</p>	<ul style="list-style-type: none"> <li>✓ MLPL has established the First Peoples Advisory Group as an ongoing forum to engage with First Peoples in Gippsland and seek feedback on how to best engage with First Peoples.</li> <li>✓ The MLPL Community and Stakeholder Engagement Framework will outline the approach for communication preferences and channels for reaching First Peoples.</li> </ul>	<p>First Peoples Advisory Group (October 2022 to May 2023)</p>	<p>N/A</p>
<p>The project should consider a Memorandum of Understanding (MOU) for First Peoples participation.</p>	<ul style="list-style-type: none"> <li>✓ The First Peoples Advisory Group terms of reference outlines the ongoing commitment to First Peoples involvement in the project. Through the First Peoples Advisory Group MLPL will establish guiding principles for First Peoples participation and compensation for engagement.</li> </ul>	<p>First Peoples Advisory Group (October 2022 to May 2023)</p>	<p>N/A</p>
<p>The project should consider cultural awareness training for contractors and subcontractors.</p>	<ul style="list-style-type: none"> <li>✓ MLPL is implementing cultural awareness training internally. A similar program will be implemented with contractors and subcontractors.</li> </ul>	<p>First Peoples Advisory Group (October 2022 to May 2023)</p>	<p>N/A</p>
<p>Social impact assessment (SIA) input needs to consider integrity, confidentiality and understanding.</p> <p>Request to input into the Sustainability Framework Action Plan.</p>	<ul style="list-style-type: none"> <li>✓ MLPL provided an opt-in option for First Peoples to input into the social impact assessment and set up separate social impact assessment meeting/s.</li> <li>✓ MLPL will provide opportunities for the First Peoples Advisory Group to input into the Sustainability Framework Strategy.</li> </ul>	<p>First Peoples Advisory Group (October 2022 to May 2023)</p> <p>First Peoples Advisory Group (October 2022 to May 2023)</p>	<p>Technical Appendix F: Heybridge Social Assessment</p> <p>Technical Appendix U: Social Assessment</p> <p>N/A</p>

Interests or concerns raised	Project response	Locations	Technical reports
<p>Interest in underwater cultural heritage findings.</p>	<ul style="list-style-type: none"> <li>MLPL have engaged with First Peoples on the findings of the underwater cultural heritage assessment. Further engagement will be undertaken with individual First Peoples organisations in Victoria and Tasmania through the Cultural Values Assessment (CVA), to further discuss the Underwater Cultural Heritage and Archaeology assessment and opportunities for further research.</li> </ul>	<p>First Peoples Advisory Group (October 2022 to May 2023)</p>	<p>Technical Appendix I: Underwater Cultural Heritage and Archaeology</p>
<p>Request to provide input into the CVA.</p>	<ul style="list-style-type: none"> <li>MLPL are working with the three First Peoples groups to prepare a CVA for each group. The CVAs will discuss values both onshore and offshore.</li> </ul>	<p>First Peoples Advisory Group (October 2022 to May 2023)</p>	<p>N/A</p>

Table 14 Feedback and responses – project design and construction

Interests or concerns raised	Project response	Locations	Technical reports
<p>Concerns about the proposed route alignment design.</p> <p>Concerns about route re-alignment and impacts to neighbouring properties.</p> <p>General concerns about constructability of the route, including interface with existing infrastructure and topography challenges.</p>	<ul style="list-style-type: none"> <li>✓ MLPL completed a rigorous route options analysis, which determined the proposed route as the most feasible and least impactful option.</li> <li>✓ Micro-siting along the route will be further refined during ongoing investigations and landholder negotiations.</li> <li>✓ It is likely only minor changes will be made to the proposed route to avoid environmentally sensitive areas or areas of concern identified by impacted private landholders.</li> </ul>	<p>Dumbalk, Meeniyah &amp; Buffalo Fish Creek and Sandy Point</p> <p>Dumbalk, Meeniyah &amp; Buffalo</p> <p>Driffield, Mirboo North &amp; Mardan</p> <p>Dumbalk, Meeniyah &amp; Buffalo</p>	<p>N/A</p>
<p>Concerns about the potential closure of Waratah Bay beach during construction.</p>	<ul style="list-style-type: none"> <li>✓ Waratah Bay Beach is not expected to be closed to beach users during construction, however temporary, short-term closures may be required to mitigate risks to public safety.</li> </ul>	<p>Fish Creek and Sandy Point</p>	<p>N/A</p>
<p>Concerns about the process to remediate any damage caused during construction to public and private properties.</p>	<ul style="list-style-type: none"> <li>✓ Construction contractors will be required to reinstate and remediate all construction areas, including haulage routes as required.</li> <li>✓ Property condition surveys will be completed prior to and after construction to inform reinstatement and remediation requirements.</li> </ul>	<p>Dumbalk, Meeniyah &amp; Buffalo</p>	<p>N/A</p>
<p>Concerns about community safety from the underground land cables due to EMF.</p>	<ul style="list-style-type: none"> <li>✓ MLPL recognises there is community interest in the potential health effects from exposure to EMF.</li> <li>✓ The on-land component of the project is not expected to generate EMF above existing levels.</li> </ul>	<p>Fish Creek and Sandy Point</p>	<p>Technical Appendix A: Electromagnetic Fields</p>

Table 15 Feedback and responses – community benefits and impacts

Interests or concerns raised	Project response	Locations	Technical reports
<p>Interest to know more about community benefit opportunities and sharing of ideas including forest conservation, biodiversity corridors and increased electricity supply.</p>	<ul style="list-style-type: none"> <li>✓ MLPL is engaging with key local stakeholders on potential opportunities for community benefit sharing.</li> <li>✓ MLPL will develop a Community Benefit Sharing Program that will seek to be equitable, rewarding and meet local needs.</li> <li>✓ The CBSP will be finalised prior to the project's Final Investment Decision in late 2024/early 2025.</li> </ul>	<p>Hazelwood &amp; Churchill Driffield, Mirboo North &amp; Mardan Fish Creek and Sandy Point</p>	<p>Technical Appendix B: Economics Technical Appendix U: Social</p>
<p>Concerns about the impacts to long term housing and holiday accommodation during construction.</p>	<ul style="list-style-type: none"> <li>✓ MLPL is developing a workforce and accommodation strategy to support contractors and mitigate impacts to local housing and accommodation during construction.</li> </ul>	<p>Fish Creek and Sandy Point</p>	<p>Technical Appendix J: Aboriginal and Historic Cultural Heritage</p>
<p>Interest in relationship to other renewable energy and offshore wind projects.</p>	<ul style="list-style-type: none"> <li>✓ MLPL is not involved with other renewable energy or offshore wind projects.</li> <li>✓ Other renewable energy projects do not connect to the project.</li> </ul>	<p>Dumbalk, Meeniyon &amp; Buffalo Fish Creek and Sandy Point Bass Strait</p>	<p>Technical Appendix U: Social</p>

Table 16 Feedback and responses – project information and benefits

Interests or concerns raised	Project response	Locations	Technical reports
<p>Significant interest in job opportunities, including the type of jobs, where to find out more, how to express interest, and when they will become available.</p>	<ul style="list-style-type: none"> <li>✓ MLPL is engaging with government agencies and tertiary education providers to identify skill gaps and opportunities.</li> <li>✓ The project is committed to maximising local content and will prepare an industry participation plan to outline the approach that contractors will need to take to ensure that fair and reasonable opportunities are provided to local businesses.</li> <li>✓ MLPL developed an internal register for interested workers and directed potential candidates to register at all engagement sessions. This list will be provided to the successful contractor.</li> <li>✓ MLPL is registered on the ICN Gateway. Interested businesses were directed to that portal at all engagement sessions.</li> </ul>	<p>All</p>	<p>Technical Appendix J: Aboriginal and Historic Cultural Heritage</p>
<p>Concern about access to information within the project's technical reports.</p>	<ul style="list-style-type: none"> <li>✓ Stakeholders and the community will have access to the technical reports during the Public Exhibition period.</li> <li>✓ A range of hard copy and digital communication materials were developed to share early findings from the technical reports.</li> </ul>	<p>Driffield, Mirboo North &amp; Mardan Dumbalk, Meeniyah &amp; Buffalo</p>	<p>N/A</p>
<p>Concern about the project's website's accessibility, language and ease of use.</p>	<ul style="list-style-type: none"> <li>✓ MLPL is currently reviewing its website for content access.</li> </ul>	<p>Fish Creek and Sandy Point</p>	<p>N/A</p>

## 4.2 Feedback and responses – Tasmania

The below table summarises the response to key issues raised by each theme. Each of the EIS/EES impact assessment reports also includes key issues and concerns raised by communities and stakeholders and outlines how these have been considered.

Table 17 Feedback and responses – Heybridge

Interests or concerns raised	Project response	Locations	Technical reports
<p>General interest in potential impacts to the environment during construction and operations.</p>	<ul style="list-style-type: none"> <li>✓ Minimising impacts to the environment was considered during the development of the preferred route selection and construction methodology.</li> <li>✓ A range of communication materials were developed to share further details about the project. Pop-up information stands at high traffic events were held in north-west Tasmania with subject matter experts available to answer questions.</li> </ul>	<p>Heybridge</p>	<p>Technical Appendix E: Heybridge Terrestrial Ecology Assessment            Technical Appendix F: Heybridge Social Assessment</p>
<p>General concerns about impacts to residents during construction and interest in construction duration.</p>	<ul style="list-style-type: none"> <li>✓ Minimising construction impacts, such as increased traffic and noise and dust, on local residents has been a key consideration during project development.</li> <li>✓ A range of communication materials were developed to share further details about the project. Pop-up information stands at high traffic events were held in north-west Tasmania with subject matter experts available to answer questions.</li> </ul>	<p>Heybridge</p>	<p>Technical Appendix F: Heybridge Social Assessment</p>
<p>Concern about noise during operation of the proposal.</p>	<ul style="list-style-type: none"> <li>✓ Minimising operational noise has been considered as part of the design development of the proposal. The design proposes to use low noise equipment and install building insulation to reduce noise levels. The final level of operational noise will depend on the final design of the converter station; however, it will be required to comply with relevant regulations.</li> </ul>	<p>Heybridge</p>	<p>Technical Appendix F: Heybridge Social assessment</p>
<p>Concerns about potential EMF impacts on local residents.</p>	<ul style="list-style-type: none"> <li>✓ Assessments indicate the maximum EMF strength outside the proposal site will be below the limit for generic household equipment (such as toasters and kettles).</li> </ul>	<p>Heybridge</p>	<p>Technical Appendix F: Heybridge Social Assessment</p>



Interests or concerns raised	Project response	Locations	Technical reports
<p>Concern about construction workforce housing availability</p>	<ul style="list-style-type: none"> <li>✓ Housing availability and affordability is acknowledged as an issue for the local community. A workforce accommodation strategy and plan is being developed in consultation with key stakeholders to address the demand from the project construction workforce and the cumulative impact of other large-scale construction and infrastructure projects in the region.</li> </ul>	<p>Heybridge</p>	<p>Technical Appendix F: Heybridge Social Assessment</p>
<p>Opportunity for use of local suppliers.</p>	<ul style="list-style-type: none"> <li>✓ An industry participation plan will be developed, which will outline opportunities for prioritising and developing local participation.</li> </ul>	<p>Heybridge</p>	<p>Technical Appendix F: Heybridge Social Assessment</p>
<p>Concern about skilled worker availability.</p>	<ul style="list-style-type: none"> <li>✓ Engagement is being undertaken with government agencies, business networks and education service providers to identify skill gaps and opportunities. A working group has been established to assess the skills and training workforce needs throughout the different project phases.</li> </ul>	<p>Heybridge</p>	<p>N/A</p>
<p>Suggestions for financial or in-kind contributions to community development in the local area near Heybridge.</p>	<ul style="list-style-type: none"> <li>✓ Engagement with key local stakeholders on potential opportunities for community benefit sharing is being undertaken. A community benefits sharing scheme will be implemented by 2025 and other shorter-term options to support community initiatives that align to the project are also being considered up to late 2024.</li> <li>✓ The proponent has a memorandum of understanding with Burnie City Council to commit \$40,000 in grant funding each year for 10 years to support local initiatives and projects that promote environmental and educational benefits for the community.</li> </ul>	<p>Heybridge</p>	<p>N/A</p>

# 5 How feedback is used

## 5.1 Design

There is a range of ways feedback is influencing the design and planning of the project, including:

- Feedback from landholders will continue to inform the route's micro-siting and the location of infrastructure such as joint pits and access tracks.
- Feedback from landholders, the community and stakeholders will enrich understanding of the local environment, potential issues and opportunities. All feedback will be considered when responding to impact assessments to minimise potential impacts.
- Feedback will also be used to maximise the value of the project's community benefits sharing scheme.
- The planning and environmental assessment stage will assess impacts from the construction, operation and decommissioning activities. For example, the project may work with farmers to understand when they undertake harvest activities and what roads they use. This will inform management measures so impacts to these roads are programmed around key harvest activities.

## 5.2 Environmental Performance Requirements

Community and stakeholder feedback has been used to inform the project's Environmental Performance Requirements (EPRs) that contractors will be required to meet to reduce impacts during construction.

The successful contractor will be encouraged to achieve the EPRs through innovation, design or construction management processes. EPRs may require:

- The creation of specific management plans (i.e. noise, vegetation, traffic) which detail how the contractor will minimise and manage impacts.
- Regular monitoring to ensure the project isn't exceeding recommended guidelines for things like air quality or noise.
- Regular consultation with the community, including notification prior to works.

EPRs will be within the Environmental Management Framework in Volume 5 of the EIS/EES.

## 5.3 Summary of key changes to project design

Throughout the engagement process, feedback has informed changes to the route's design and proposed construction methodology. These changes include:

- Micro siting and adjusting route to accommodate future land use and farming operations of landholders.
- Screening for converter station and early planting.
- Use of HDD at sensitive locations.

## 5.4 Communication and engagement

Information gathered during Phase 3 will also be used to ensure engagement activities meet local needs and expectations during the Public Exhibition Phase, where we will be supporting DTP's statutory approvals process.

Upon approval and award, a summary of community feedback including community values, areas of interest and concern will be provided to the successful contractors to address/ consider within their EPR response, to ensure consistency, continuity and so issues and concerns are mitigated during construction.

# 6 For more information

For more information and to sign up for project updates please go to [marinuslink.com.au](https://marinuslink.com.au).

For more information on future activities or to find more information on documents and resources, go to [marinuslink.com.au/engagement/](https://marinuslink.com.au/engagement/).

To contact the team please:

Email: [team@marinuslink.com.au](mailto:team@marinuslink.com.au)

Call: 1300 765 275

Mail: Marinus Link Pty Ltd PO Box 606 Moonah Tasmania 7009